

Anti-AQP2 antibody (200-250) (STJ500126)

STJ500126

GENERAL INFORMATION

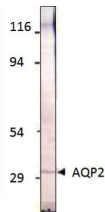
Product Type	Primary antibodies
Short Description	Rabbit polyclonal antibody anti-AQP2 (200-250) is suitable for use in ELISA, Immunoprecipitation and Western Blot research applications.
Applications	ELISA, IP, WB
Host/Source	Rabbit
Reactivity	Bovine, Human, Mouse, Rat, Sheep

PRODUCT PROPERTIES

Clonality	Polyclonal
Clone ID	
Concentration	0.50-0.62 µg/µl
Conjugation	Unconjugated
Purification	Affinity Purified
Dilution Range	WB: 1:500 ELISA: 1:10, 000 IP: 1:200
Formulation	
Isotype	IgG
Storage Instruction	Store at -20°C for long term storage. Avoid freeze-thaw cycles.

TARGET INFORMATION

Gene ID	25386
Gene Symbol	Aqp2
Uniprot ID	AQP2_RAT
Immunogen	Synthetic peptide taken within amino acid region 200-250 on human Aquaporin 2 protein.
Immunogen Region	200-250
Specificity	
Immunogen Sequence	



Western blot with Anti-Aquaporin 2 Antibody (STJ500126) with peptide on at 1:500 dilution in buffer.

This product is suitable for in-vitro studies under the RESEARCH USE ONLY [RUO] licence. This product must not be used as for diagnostic or other medical purposes.
St John's Laboratory Ltd, Knowledge Dock Business Centre, University Way, London, E16 2RD | Tel: 0208 223 3081