

Anti-MYC antibody (200-250) (STJ500591)

STJ500591

GENERAL INFORMATION

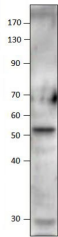
Product Type	Primary antibodies
Short Description	Rabbit polyclonal antibody anti-MYC (200-250) is suitable for use in ELISA, Immunoprecipitation and Western Blot research applications.
Applications	ELISA, IP, WB
Host/Source	Rabbit
Reactivity	Cat, Human, Monkey

PRODUCT PROPERTIES

Clonality	Polyclonal
Clone ID	
Concentration	0.55-0.75 µg/µl
Conjugation	Unconjugated
Purification	Affinity Purified
Dilution Range	WB: 1:500 DB: 1:10, 000 ELISA: 1:10, 000 IP: 1:150
Formulation	
Isotype	IgG
Storage Instruction	Store at -20°C for long term storage. Avoid freeze-thaw cycles.

TARGET INFORMATION

Gene ID	4609
Gene Symbol	MYC
Uniprot ID	MYC_HUMAN
Immunogen	Synthetic peptide taken within amino acid region 200-250 on human cMyc protein.
Immunogen Region	200-250
Specificity	
Immunogen Sequence	



Western blot with Anti-MYC Antibody (STJ500591) of THP cell at 1:500 dilution in buffer.