

Anti-EDIL3 antibody (30-60) (STJ500753)

STJ500753

GENERAL INFORMATION

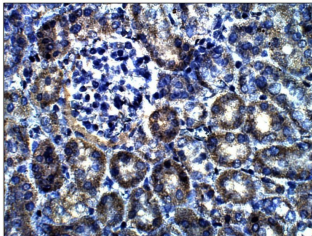
| | |
|--------------------------|---|
| Product Type | Primary antibodies |
| Short Description | Rabbit polyclonal antibody anti-EDIL3 (30-60) is suitable for use in ELISA, Immunohistochemistry, Immunoprecipitation and Western Blot research applications. |
| Applications | ELISA, IHC, IP, WB |
| Host/Source | Rabbit |
| Reactivity | Cat, Human, Monkey, Mouse, Rat |

PRODUCT PROPERTIES

| | |
|-----------------------|--|
| Clonality | Polyclonal |
| Clone ID | |
| Concentration | 0.69-0.70 µg/µl |
| Conjugation | Unconjugated |
| Purification | Affinity Purified |
| Dilution Range | WB: 1:500 DB: 1:20, 000 ELISA: 1:20, 000 IP: 1:200 IHC: 1:50-1:150 |
| Formulation | |
| Isotype | IgG |
| Storage | Store at -20°C for long term storage. Avoid freeze-thaw cycles. |
| Instruction | |

TARGET INFORMATION

| | |
|---------------------------|--|
| Gene ID | 13612 |
| Gene Symbol | Edil3 |
| Uniprot ID | EDIL3_MOUSE |
| Immunogen | Synthetic peptide taken within amino acid region 30-60 on Del-1 protein. |
| Immunogen Region | 30-60 |
| Specificity | |
| Immunogen Sequence | |



Immunohistochemistry of mouse kidney with Anti-EDIL3 primary antibody (STJ500753) at 1:100 dilution in Buffer. Section was treated with DAB and Haematoxylin stain. Magnification is at 40X.

This product is suitable for in-vitro studies under the RESEARCH USE ONLY [RUO] licence. This product must not be used as for diagnostic or other medical purposes.
St John's Laboratory Ltd, Knowledge Dock Business Centre, University Way, London, E16 2RD | Tel: 0208 223 3081