

Anti-Inp2p antibody (STJ501470)

STJ501470

GENERAL INFORMATION

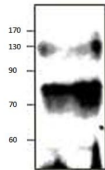
Product Type	Primary antibodies
Short Description	Rabbit polyclonal antibody anti-Inp2p is suitable for use in ELISA and Western Blot research applications.
Applications	ELISA, WB
Host/Source	Rabbit
Reactivity	S.cerevisiae

PRODUCT PROPERTIES

Clonality	Polyclonal
Clone ID	
Concentration	0.55-0.75 µg/µl
Conjugation	Unconjugated
Purification	Affinity Purified
Dilution Range	WB: 1:500 DB: 1:10, 000 ELISA: 1:10, 000
Formulation	
Isotype	IgG
Storage Instruction	Store at -20°C for long term storage. Avoid freeze-thaw cycles.

TARGET INFORMATION

Gene ID	
Gene Symbol	
Uniprot ID	
Immunogen	Synthetic peptide corresponding to unique amino acid sequences on Saccharomyces cerevisiae S288c Inp2p protein.
Immunogen Region	
Specificity	
Immunogen Sequence	



Western blot with Anti-Inp2p Antibody (STJ501470) of yeast extract at 1:500 dilution in buffer.