

Anti-PDE3B antibody (1060-1110) (STJ502268)

STJ502268

GENERAL INFORMATION

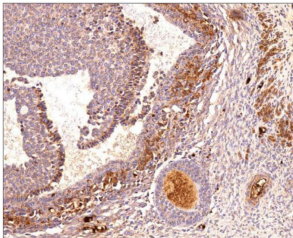
Product Type	Primary antibodies
Short Description	Rabbit polyclonal antibody anti-PDE3B (1060-1110) is suitable for use in Confocal Microscopy, ELISA, Immunocytochemistry, Immunofluorescence, Immunohistochemistry, Immunoprecipitation and Western Blot research applications.
Applications	CM, ELISA, ICC, IF, IHC, IP, WB
Host/Source	Rabbit
Reactivity	Chicken, Human, Monkey, Mouse, Rat

PRODUCT PROPERTIES

Clonality	Polyclonal
Clone ID	
Concentration	0.70 µg/µl
Conjugation	Unconjugated
Purification	Affinity Purified
Dilution Range	WB: 1:500 DB: 1:10, 000 ELISA: 1:10, 000 IP: 1:200 IHC: 1:250 ICC: 1:250 IF: 1:250 CFM: 1:250
Formulation	
Isotype	IgG
Storage	Store at -20°C for long term storage. Avoid freeze-thaw cycles.
Instruction	

TARGET INFORMATION

Gene ID	29516
Gene Symbol	Pde3b
Uniprot ID	PDE3B_RAT
Immunogen	Synthetic peptide taken within amino acid region 1060-1110 on human PDE3B protein.
Immunogen Region	1060-1110
Specificity	This antibody does not cross react with PDE4A variants nor with any other PDE family members. This antibody will recognize PDE3B variants.
Immunogen Sequence	



Immunohistochemistry of human ovarian medulla with Anti-PDE3B primary antibody (STJ502268) at 1:100 dilution in buffer.