

Anti-PDE4 antibody (STJ502274)

STJ502274

GENERAL INFORMATION

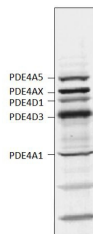
Product Type	Primary antibodies
Short Description	Rabbit polyclonal antibody anti-PDE4 is suitable for use in Confocal Microscopy, ELISA, Immunocytochemistry, Immunofluorescence, Immunohistochemistry, Immunoprecipitation and Western Blot research applications.
Applications	CM, ELISA, ICC, IF, IHC, IP, WB
Host/Source	Rabbit
Reactivity	Chicken, Human, Monkey, Mouse, Rat

PRODUCT PROPERTIES

Clonality	Polyclonal
Clone ID	
Concentration	0.62 µg/µl
Conjugation	Unconjugated
Purification	Affinity Purified
Dilution Range	WB: 1:500-1:1,000 DB: 1:10,000 ELISA: 1:10,000 IP: 1:200 IHC: 1:200 ICC: 1:200 IF: 1:200 CFM: 1:200
Formulation	
Isotype	IgG
Storage Instruction	Store at -20°C for long term storage. Avoid freeze-thaw cycles.

TARGET INFORMATION

Gene ID	
Gene Symbol	
Uniprot ID	
Immunogen	Synthetic peptide common to most PDE4 subtypes: PDE4A, PDE4D, PDE4B
Immunogen Region	
Specificity	This antibody detects all known PDE4 A and D variants including PDE4A1, A5, Ax, A8 and PDE4D1-D5. It has low affinity for PDE4B variants.
Immunogen Sequence	



Western blot with Anti-PDE4 Antibody (STJ502274) on rat cortical membranes. Antibody at 1:500 dilution in buffer.