

Anti-Phospho-PDE5A antibody (120-170) (STJ502621)

STJ502621

GENERAL INFORMATION

Product Type	Primary antibodies
Short Description	Rabbit polyclonal antibody anti-Phospho-PDE5A (120-170) is suitable for use in ELISA, Immunocytochemistry, Immunohistochemistry, Immunoprecipitation and Western Blot research applications.
Applications	ELISA, ICC, IHC, IP, WB
Host/Source	Rabbit
Reactivity	Bovine, Human, Mouse, Pig, Rat, Sheep

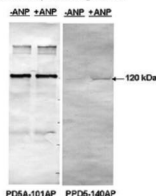
PRODUCT PROPERTIES

Clonality	Polyclonal
Clone ID	
Concentration	1.0-1.25 µg/µl
Conjugation	Unconjugated
Purification	Affinity Purified
Dilution Range	WB: 1:500 DB: 1:10, 000 ELISA: 1:10, 000 IP: 1:200 IHC: 1:100 ICC: 1:100 IF: 1:100 CFM: 1:100
Formulation	
Isotype	IgG
Storage	Store at -20°C for long term storage. Avoid freeze-thaw cycles.
Instruction	

TARGET INFORMATION

Gene ID	
Gene Symbol	
Uniprot ID	
Immunogen	Synthetic peptide common to all PDE5A variants taken within amino acid region 120-170 on human PDE5A protein. Phosphorylated
Immunogen Region	120-170
Specificity	This antibody will detect only PDE5A protein that has been phosphorylated at the PKG site. Will not detect unphosphorylated PDE5A, or other PDE family members.
Immunogen Sequence	

Human-PDE5A1-GFP overexpressing cells



Western blot with Anti-Phospho-PDE5A Antibody (STJ502621) and recombinant PDE5A1. Overexpressing cells were treated with or without ANP. Antibody at 1:500 dilution in buffer.

This product is suitable for in-vitro studies under the RESEARCH USE ONLY [RUO] licence. This product must not be used as for diagnostic or other medical purposes.
St John's Laboratory Ltd, Knowledge Dock Business Centre, University Way, London, E16 2RD | Tel: 0208 223 3081