

## Anti-SMAD4 antibody (400-450) (STJ503060)

STJ503060

### GENERAL INFORMATION

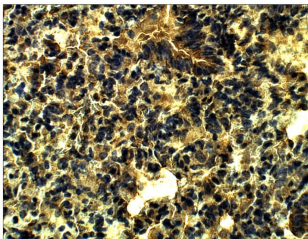
<b>Product Type</b>	Primary antibodies
<b>Short Description</b>	Rabbit polyclonal antibody anti-SMAD4 (400-450) is suitable for use in ELISA, Immunohistochemistry, Immunoprecipitation and Western Blot research applications.
<b>Applications</b>	ELISA, IHC, IP, WB
<b>Host/Source</b>	Rabbit
<b>Reactivity</b>	D.melanogaster, Human, Mouse, Rat

### PRODUCT PROPERTIES

<b>Clonality</b>	Polyclonal
<b>Clone ID</b>	
<b>Concentration</b>	0.6 µg/µl
<b>Conjugation</b>	Unconjugated
<b>Purification</b>	Affinity Purified
<b>Dilution Range</b>	WB: 1:500 DB: 1:10, 000 ELISA: 1:10, 000 IP: 1:200 IHC: 1:50-1:150
<b>Formulation</b>	
<b>Isotype</b>	IgG
<b>Storage</b>	Store at -20°C for long term storage. Avoid freeze-thaw cycles.
<b>Instruction</b>	

### TARGET INFORMATION

<b>Gene ID</b>	<a href="#">4089</a>
<b>Gene Symbol</b>	<a href="#">SMAD4</a>
<b>Uniprot ID</b>	<a href="#">SMAD4_HUMAN</a>
<b>Immunogen</b>	Synthetic peptide taken within amino acid region 400-450 on human SMAD4 protein.
<b>Immunogen Region</b>	400-450
<b>Specificity</b>	Will not label the human short form of SMAD4 protein. Will only label long form SMAD4 protein.
<b>Immunogen Sequence</b>	



Immunohistochemistry of mouse liver with Anti-SMAD4 primary antibody (STJ503060) at 1:50 dilution in Buffer. Section was treated with DAB and Haematoxylin stain. Magnification is at 40X.