

## Anti-WDR5 antibody (157-174) (STJ503518)

STJ503518

### GENERAL INFORMATION

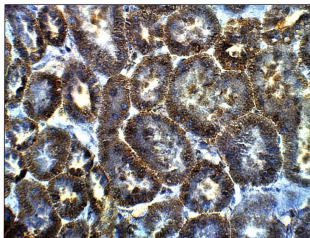
<b>Product Type</b>	Primary antibodies
<b>Short Description</b>	Rabbit polyclonal antibody anti-WDR5 (157-174) is suitable for use in ELISA, Immunohistochemistry, Immunoprecipitation and Western Blot research applications.
<b>Applications</b>	ELISA, IHC, IP, WB
<b>Host/Source</b>	Rabbit
<b>Reactivity</b>	A.thaliana, Bovine, Chicken, Dog, Human, Monkey, Mouse, Pig, Rat, Xenopus, Zebra Fish

### PRODUCT PROPERTIES

<b>Clonality</b>	Polyclonal
<b>Clone ID</b>	
<b>Concentration</b>	0.67 µg/µl
<b>Conjugation</b>	Unconjugated
<b>Purification</b>	Affinity Purified
<b>Dilution Range</b>	WB: 1:500 DB: 1:10, 000 ELISA: 1:10, 000 IP: 1:200 IHC: 1:100
<b>Formulation</b>	
<b>Isotype</b>	IgG
<b>Storage</b>	Store at -20°C for long term storage. Avoid freeze-thaw cycles.
<b>Instruction</b>	

### TARGET INFORMATION

<b>Gene ID</b>	<a href="#">11091</a>
<b>Gene Symbol</b>	<a href="#">WDR5</a>
<b>Uniprot ID</b>	<a href="#">WDR5_HUMAN</a>
<b>Immunogen</b>	Synthetic peptide: DVKTGKCLKTLPAHSDPV corresponding to amino acids 157-174 of Human WDR5 protein.
<b>Immunogen Region</b>	157-174
<b>Specificity</b>	
<b>Immunogen Sequence</b>	



Immunohistochemistry of baboon kidney with Anti-WDR5 primary antibody (STJ503518) at 1:100 dilution in Buffer. Section was treated with DAB and Haematoxylin stain. Magnification is at 40X.

---

This product is suitable for in-vitro studies under the RESEARCH USE ONLY [RUO] licence. This product must not be used as for diagnostic or other medical purposes.  
St John's Laboratory Ltd, Knowledge Dock Business Centre, University Way, London, E16 2RD | Tel: 0208 223 3081