

## Anti-CLO29 antibody (30-43) (STJ72809)

STJ72809

### GENERAL INFORMATION

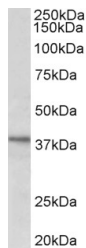
<b>Product Type</b>	Primary antibodies
<b>Short Description</b>	Goat polyclonal antibody anti-CLO29 (30-43) is suitable for use in ELISA, Western Blot and ChImmunoprecipitation research applications.
<b>Applications</b>	Pep-ELISA, WB, ChIP
<b>Host/Source</b>	Goat
<b>Reactivity</b>	Human, Pig, Sheep, Cow

### PRODUCT PROPERTIES

<b>Clonality</b>	Polyclonal
<b>Clone ID</b>	
<b>Concentration</b>	0.5 mg/mL
<b>Conjugation</b>	Unconjugated
<b>Purification</b>	Purified from goat serum by ammonium sulphate precipitation followed by antigen affinity chromatography using the immunizing peptide.
<b>Dilution Range</b>	WB-1-3µg/ml ELISA-antibody detection limit dilution 1:4000.
<b>Formulation</b>	0.5 mg/ml in Tris saline, 0.02% sodium azide, pH7.3 with 0.5% bovine serum albumin. NA
<b>Isotype</b>	IgG
<b>Storage Instruction</b>	Store at -20 on receipt and minimise freeze-thaw cycles.

### TARGET INFORMATION

<b>Gene ID</b>	91298
<b>Gene Symbol</b>	C12orf29
<b>Uniprot ID</b>	CL029_HUMAN
<b>Immunogen</b>	
<b>Immunogen Region</b>	30-43
<b>Specificity</b>	This antibody is expected to recognize isoform 1 (Q8N999-1) and isoform 3 (Q8N999-3) as described in UniprotKB.
<b>Immunogen Sequence</b>	QPFKVLATETVSHK



STJ72809 (1µg/ml) staining of HeLa lysate (35µg protein in RIPA buffer). Primary incubation was 1 hour. Detected by chemiluminescence.