

## Anti-Cleaved-CASP9-D330 antibody (250-330 C-Term) (STJ90012)

STJ90012

### GENERAL INFORMATION

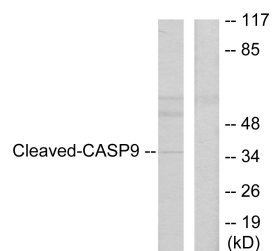
<b>Product Type</b>	Primary antibodies
<b>Short Description</b>	Rabbit polyclonal antibody anti-Cleaved-Caspase-9-D330 (250-330 C-Term) is suitable for use in Western Blot, Immunohistochemistry, Immunofluorescence and ELISA research applications.
<b>Applications</b>	WB, IHC-P, IF-P, ELISA
<b>Host/Source</b>	Rabbit
<b>Reactivity</b>	Human, Rat, Mouse

### PRODUCT PROPERTIES

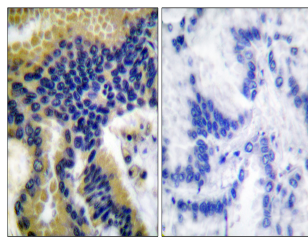
<b>Clonality</b>	Polyclonal
<b>Clone ID</b>	
<b>Concentration</b>	1 mg/mL
<b>Conjugation</b>	Unconjugated
<b>Purification</b>	The antibody was affinity-purified from rabbit anti-serum by affinity-chromatography.
<b>Dilution Range</b>	WB 1:500-1:2000 IHC 1:100-1:300 ELISA 1:40000
<b>Formulation</b>	PBS, 50% Glycerol, 0.5% BSA and 0.02% Sodium Azide.
<b>Isotype</b>	IgG
<b>Storage Instruction</b>	Store at -20°C for up to 1 year from the date of receipt, and avoid repeat freeze-thaw cycles.

### TARGET INFORMATION

<b>Gene ID</b>	842
<b>Gene Symbol</b>	CASP9
<b>Uniprot ID</b>	CASP9_HUMAN
<b>Immunogen</b>	The antiserum was produced against synthesized peptide derived from human Caspase 9 at amino acid range 281-330
<b>Immunogen Region</b>	250-330 C-Term
<b>Specificity</b>	Cleaved-CASP9-D330 polyclonal antibody (Caspase-9) binds to endogenous Caspase-9 at the amino acid region 250-330 C-Term.
<b>Immunogen Sequence</b>	



Western blot analysis of lysates from HeLa cells, treated with Etoposide 25uM 60', using Caspase 9 (Cleaved-Asp330) Antibody. The lane on the right is blocked with the synthesized peptide.



Immunohistochemistry analysis of paraffin-embedded human lung carcinoma tissue, using Caspase 9 (Cleaved-Asp330) Antibody. The picture on the right is blocked with the synthesized peptide.