

Anti-Acetyl-XRCC6-Lys539 antibody (STJ90147)

STJ90147

GENERAL INFORMATION

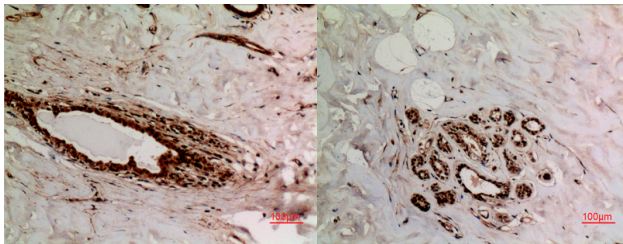
Product Type	Primary antibodies
Short Description	Rabbit polyclonal antibody anti-Acetyl-X-Ray Repair Cross-Complementing Protein 6-Lys539 is suitable for use in Western Blot, Immunohistochemistry, Immunofluorescence and ELISA research applications.
Applications	WB, IHC-P, IF-P, ELISA
Host/Source	Rabbit
Reactivity	Human, Rat, Mouse

PRODUCT PROPERTIES

Clonality	Polyclonal
Clone ID	
Concentration	1 mg/mL
Conjugation	Unconjugated
Purification	The antibody was affinity-purified from rabbit anti-serum by affinity-chromatography.
Dilution Range	WB 1:500-1:2000 IHC 1:100-300 ELISA 1:20000
Formulation	PBS, 50% Glycerol, 0.5% BSA and 0.02% Sodium Azide.
Isotype	IgG
Storage Instruction	Store at -20°C for up to 1 year from the date of receipt, and avoid repeat freeze-thaw cycles.

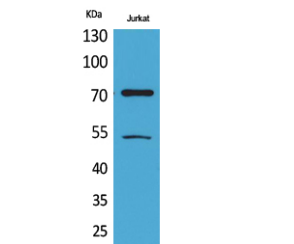
TARGET INFORMATION

Gene ID	2547
Gene Symbol	XRCC6
Uniprot ID	XRCC6_HUMAN
Immunogen Region	Synthesized acetyl-peptide derived from the human Ku-70 around the acetylation site of K539.
Specificity	Acetyl-XRCC6-Lys539 polyclonal antibody (X-Ray Repair Cross-Complementing Protein 6) binds to endogenous X-Ray Repair Cross-Complementing Protein 6.
Immunogen Sequence	



Immunohistochemical analysis of paraffin-embedded human-breast, antibody was diluted at 1:100

Immunohistochemical analysis of paraffin-embedded human-breast, antibody was diluted at 1:100



Western blot analysis of Jurkat cells using Acetyl-Ku-70 (K539) Polyclonal Antibody. Antibody was diluted at 1:500. Secondary antibody was diluted at 1:20000

This product is suitable for in-vitro studies under the RESEARCH USE ONLY [RUO] licence. This product must not be used as for diagnostic or other medical purposes.
St John's Laboratory Ltd, Knowledge Dock Business Centre, University Way, London, E16 2RD | Tel: 0208 223 3081