

Anti-Phospho-Abl1/2-Tyr393/439 antibody (380-460) (STJ90164)

STJ90164

GENERAL INFORMATION

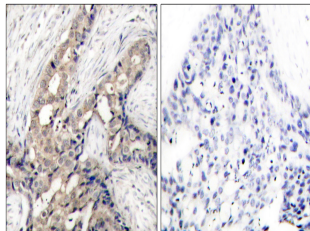
Product Type	Primary antibodies
Short Description	Rabbit polyclonal antibody anti-Phospho-Tyrosine-protein kinase ABL1 and Tyrosine-protein kinase ABL2-Tyr393/439 (380-460) is suitable for use in Western Blot, Immunohistochemistry, Immunofluorescence, Immunocytochemistry and ELISA research applications
Applications	WB, IHC-P, IF, ICC, ELISA
Host/Source	Rabbit
Reactivity	Human, Mouse

PRODUCT PROPERTIES

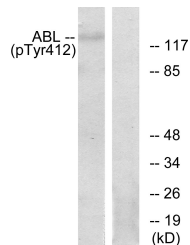
Clonality	Polyclonal
Clone ID	
Concentration	1 mg/mL
Conjugation	Unconjugated
Purification	The antibody was affinity-purified from rabbit anti-serum by affinity-chromatography.
Dilution Range	WB 1:500-1:2000 IHC 1:100-1:300 IF 1:200-1:1000 ELISA 1:5000
Formulation	PBS, 50% Glycerol, 0.5% BSA and 0.02% Sodium Azide.
Isotype	IgG
Storage Instruction	Store at -20°C for up to 1 year from the date of receipt, and avoid repeat freeze-thaw cycles.

TARGET INFORMATION

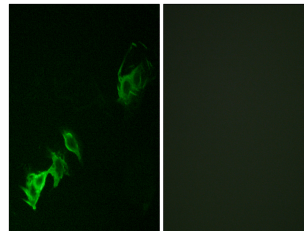
Gene ID	27 25
Gene Symbol	ABL2 ABL1
Uniprot ID	ABL2_HUMAN ABL1_HUMAN
Immunogen	The antiserum was produced against synthesized peptide derived from human Abl around the phosphorylation site of Tyr393/412 at amino acid range 406-455
Immunogen Region	380-460
Specificity	Phospho-Abl1/2-Tyr393/439 polyclonal antibody (Tyrosine-protein kinase ABL1 and Tyrosine-protein kinase ABL2) binds to endogenous Tyrosine-protein kinase ABL1 and Tyrosine-protein kinase ABL2 at the amino acid region 380-460 only when phosphorylated
Immunogen Sequence	



Immunohistochemistry analysis of paraffin-embedded human breast carcinoma, using Abl (Phospho-Tyr393/412) Antibody. The picture on the right is blocked with the phospho peptide.



Western blot analysis of lysates from RAW264.7 cells, using Abl (Phospho-Tyr393/412) Antibody. The lane on the right is blocked with the phospho peptide.



Immunofluorescence analysis of A549 cells, using Abl (Phospho-Tyr393/412) Antibody. The picture on the right is blocked with the phospho peptide.

This product is suitable for in-vitro studies under the RESEARCH USE ONLY [RUO] licence. This product must not be used as for diagnostic or other medical purposes.
St John's Laboratory Ltd, Knowledge Dock Business Centre, University Way, London, E16 2RD | Tel: 0208 223 3081