

Anti-Phospho-EIF2S1-Ser51 antibody (30-110) (STJ90253)

STJ90253

GENERAL INFORMATION

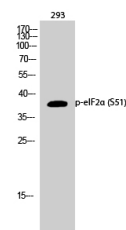
Product Type	Primary antibodies
Short Description	Rabbit polyclonal antibody anti-Phospho-Eukaryotic Translation Initiation Factor 2 Subunit 1-Ser51 (30-110) is suitable for use in Immunofluorescence, Immunocytochemistry, Western Blot, Immunohistochemistry and ELISA research applications.
Applications	IF, ICC, WB, IHC-P, ELISA
Host/Source	Rabbit
Reactivity	Human, Mouse, Rat

PRODUCT PROPERTIES

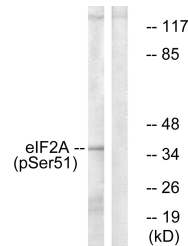
Clonality	Polyclonal
Clone ID	
Concentration	1 mg/mL
Conjugation	Unconjugated
Purification	The antibody was affinity-purified from rabbit anti-serum by affinity-chromatography.
Dilution	IF 1:50-200
Range	WB 1:500-1:2000 IHC 1:100-1:300 ELISA 1:10000
Formulation	PBS, 50% Glycerol, 0.5% BSA and 0.02% Sodium Azide.
Isotype	IgG
Storage Instruction	Store at -20°C for up to 1 year from the date of receipt, and avoid repeat freeze-thaw cycles.

TARGET INFORMATION

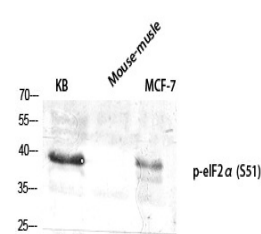
Gene ID	1965
Gene Symbol	EIF2S1
Uniprot ID	IF2A_HUMAN
Immunogen	The antiserum was produced against synthesized peptide derived from human eIF2 alpha around the phosphorylation site of Ser51 at amino acid range 21-70
Immunogen Region	30-110
Specificity	Phospho-EIF2S1-Ser51 polyclonal antibody (Eukaryotic Translation Initiation Factor 2 Subunit 1) binds to endogenous Eukaryotic Translation Initiation Factor 2 Subunit 1 at the amino acid region 30-110 only when phosphorylated at Ser51.
Immunogen Sequence	



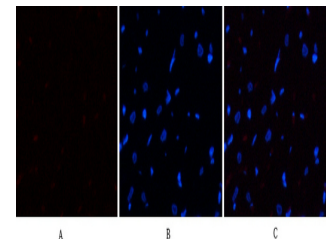
Western blot analysis of 293 cells using Phospho-eIF2 Alpha (S51) Polyclonal Antibody diluted at 1: 2000



Western blot analysis of lysates from K562 cells treated with IFN-alpha 1000U/ml 18h, using eIF2 alpha (Phospho-Ser51) Antibody. The lane on the right is blocked with the phospho peptide.



Western blot analysis of various cells using Phospho-eIF2 Alpha (S51) Polyclonal Antibody diluted at 1: 2000



Immunofluorescence analysis of rat-heart tissue: 1. eIF2 Alpha (phospho Ser51) Polyclonal Antibody (red) was diluted at 1:200 (4°C, overnight). 2. Cy3 labeled Secondary antibody was diluted at 1:300 (room temperature, 50min). 3. Picture B: DAPI (blue) 10min. Picture A:Target. Picture B: DAPI. Picture C: merge of A+B

This product is suitable for in-vitro studies under the RESEARCH USE ONLY [RUO] licence. This product must not be used as for diagnostic or other medical purposes.
St John's Laboratory Ltd, Knowledge Dock Business Centre, University Way, London, E16 2RD | Tel: 0208 223 3081