

## Anti-Phospho-ERK 1/2-Thr202 antibody (140-220) (STJ90260)

STJ90260

### GENERAL INFORMATION

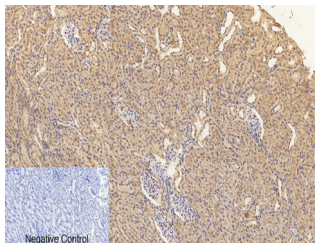
<b>Product Type</b>	Primary antibodies
<b>Short Description</b>	Rabbit polyclonal antibody anti-Phospho-Mitogen-activated protein kinase 3 and Mitogen-activated protein kinase 1-Thr202 (140-220) is suitable for use in Immunofluorescence, Immunocytochemistry, Western Blot, Immunohistochemistry and ELISA research a
<b>Applications</b>	IF, ICC, WB, IHC-P, ELISA
<b>Host/Source</b>	Rabbit
<b>Reactivity</b>	Human, Mouse, Rat

### PRODUCT PROPERTIES

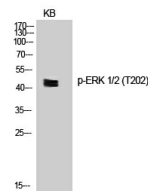
<b>Clonality</b>	Polyclonal
<b>Clone ID</b>	
<b>Concentration</b>	1 mg/mL
<b>Conjugation</b>	Unconjugated
<b>Purification</b>	The antibody was affinity-purified from rabbit anti-serum by affinity-chromatography.
<b>Dilution</b>	IF 1:50-200
<b>Range</b>	WB 1:500-2000 IHC 1:50-300 IHC 1:50-300
<b>Formulation</b>	PBS, 50% Glycerol, 0.5% BSA and 0.02% Sodium Azide.
<b>Isotype</b>	IgG
<b>Storage Instruction</b>	Store at -20°C for up to 1 year from the date of receipt, and avoid repeat freeze-thaw cycles.

### TARGET INFORMATION

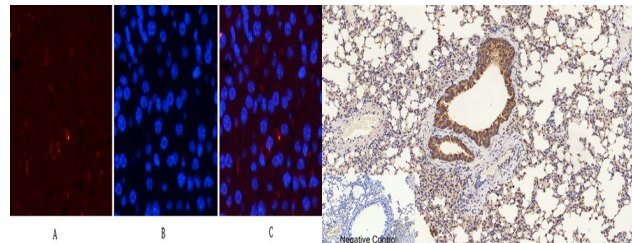
<b>Gene ID</b>	<a href="#">5594</a> <a href="#">5595</a>
<b>Gene Symbol</b>	<a href="#">MAPK1</a> <a href="#">MAPK3</a>
<b>Uniprot ID</b>	<a href="#">MK01_HUMAN</a> <a href="#">MK03_HUMAN</a>
<b>Immunogen</b>	The antiserum was produced against synthesized peptide derived from human p44/42 MAP Kinase around the phosphorylation site of Thr202 at amino acid range 169-218
<b>Immunogen Region</b>	140-220
<b>Specificity</b>	Phospho-ERK 1/2-Thr202 polyclonal antibody (Mitogen-activated protein kinase 3 and Mitogen-activated protein kinase 1) binds to endogenous Mitogen-activated protein kinase 3 and Mitogen-activated protein kinase 1 at the amino acid region 140-220 only
<b>Immunogen Sequence</b>	



Immunohistochemical analysis of paraffin-embedded Rat-kidney tissue. 1. ERK 1/2 (phospho Thr202) Polyclonal Antibody was diluted at 1:200 (4°C, overnight). 2. Sodium citrate pH 6.0 was used for antibody retrieval (>98°C, 20min). 3. Secondary antibody was diluted at 1:200 (room temperature, 30min). Negative control was used by secondary antibody only.



Western blot analysis of KB cells using Phospho-ERK 1/2 (T202) Polyclonal Antibody diluted at 1: 1000



Immunofluorescence analysis of mouse-liver tissue. 1. ERK 1/2 (phospho Thr202) Polyclonal Antibody (red) was diluted at 1:200 (4°C, overnight). 2. Cy3 labeled Secondary antibody was diluted at 1:300 (room temperature, 50min). 3. Picture B: DAPI (blue) 10min. Picture A: Target. Picture B: DAPI. Picture C: merge of A+B

Immunohistochemical analysis of paraffin-embedded Mouse-lung tissue. 1. ERK 1/2 (phospho Thr202) Polyclonal Antibody was diluted at 1:200 (4°C, overnight). 2. Sodium citrate pH 6.0 was used for antibody retrieval (>98°C, 20min). 3. Secondary antibody was diluted at 1:200 (room temperature, 30min). Negative control was used by secondary antibody only.