

Anti-Phospho-MAPT-Thr181 antibody (440-520) (STJ90425)

STJ90425

GENERAL INFORMATION

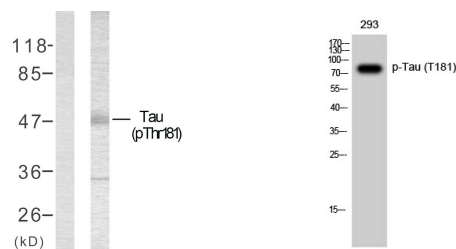
Product Type	Primary antibodies
Short Description	Rabbit polyclonal antibody anti-Phospho-Microtubule-Associated Protein Tau-Thr181 (440-520) is suitable for use in Western Blot and ELISA research applications.
Applications	WB, ELISA
Host/Source	Rabbit
Reactivity	Human, Rat, Mouse

PRODUCT PROPERTIES

Clonality	Polyclonal
Clone ID	
Concentration	1 mg/mL
Conjugation	Unconjugated
Purification	The antibody was affinity-purified from rabbit anti-serum by affinity-chromatography.
Dilution	WB 1:500-1:2000
Range	ELISA 1:20000
Formulation	PBS, 50% Glycerol, 0.5% BSA and 0.02% Sodium Azide.
Isotype	IgG
Storage	Store at -20°C for up to 1 year from the date of receipt, and avoid repeat freeze-thaw cycles.
Instruction	

TARGET INFORMATION

Gene ID	4137
Gene Symbol	MAPT
Uniprot ID	TAU_HUMAN
Immunogen	The antiserum was produced against synthesized peptide derived from human Tau around the phosphorylation site of Thr181 at amino acid range 471-520
Immunogen Region	440-520
Specificity	Phospho-MAPT-Thr181 polyclonal antibody (Microtubule-Associated Protein Tau) binds to endogenous Microtubule-Associated Protein Tau at the amino acid region 440-520 only when phosphorylated at Thr181.
Immunogen Sequence	



Western blot analysis of lysates from mouse brain, using Tau (Phospho-Thr181) Antibody. The lane on the left is blocked with the phospho peptide.

Western blot analysis of 293 cells using Phospho-Tau (T181) Polyclonal Antibody diluted at 1: 2000

This product is suitable for in-vitro studies under the RESEARCH USE ONLY [RUO] licence. This product must not be used as for diagnostic or other medical purposes.
 St John's Laboratory Ltd, Knowledge Dock Business Centre, University Way, London, E16 2RD | Tel: 0208 223 3081