

Anti-Phospho-PLCG1-Tyr1253 antibody (1190-1270) (STJ90475)

STJ90475

GENERAL INFORMATION

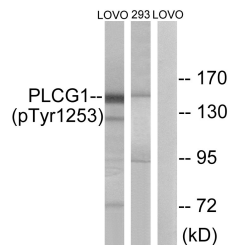
Product Type	Primary antibodies
Short Description	Rabbit polyclonal antibody anti-Phospho-1-Phosphatidylinositol 4-5-Bisphosphate Phosphodiesterase Gamma-1-Tyr1253 (1190-1270) is suitable for use in Western Blot and ELISA research applications.
Applications	WB, ELISA
Host/Source	Rabbit
Reactivity	Human, Mouse, Rat

PRODUCT PROPERTIES

Clonality	Polyclonal
Clone ID	
Concentration	1 mg/mL
Conjugation	Unconjugated
Purification	The antibody was affinity-purified from rabbit anti-serum by affinity-chromatography.
Dilution	WB 1:500-1:2000
Range	ELISA 1:20000
Formulation	PBS, 50% Glycerol, 0.5% BSA and 0.02% Sodium Azide.
Isotype	IgG
Storage	Store at -20°C for up to 1 year from the date of receipt, and avoid repeat freeze-thaw cycles.
Instruction	

TARGET INFORMATION

Gene ID	5335
Gene Symbol	PLCG1
Uniprot ID	PLCG1_HUMAN
Immunogen	The antiserum was produced against synthesized peptide derived from human PLCG1 around the phosphorylation site of Tyr1253 at amino acid range 1221-1270
Immunogen Region	1190-1270
Specificity	Phospho-PLCG1-Tyr1253 polyclonal antibody (1-Phosphatidylinositol 4-5-Bisphosphate Phosphodiesterase Gamma-1) binds to endogenous 1-Phosphatidylinositol 4-5-Bisphosphate Phosphodiesterase Gamma-1 at the amino acid region 1190-1270 only when phosphory
Immunogen Sequence	



Western blot analysis of lysates from LOVO cells treated with and 293 cells treated with heat shock, using PLCG1 (Phospho-Tyr1253) Antibody. The lane on the right is blocked with the phospho peptide.

This product is suitable for in-vitro studies under the RESEARCH USE ONLY [RUO] licence. This product must not be used as for diagnostic or other medical purposes.
 St John's Laboratory Ltd, Knowledge Dock Business Centre, University Way, London, E16 2RD | Tel: 0208 223 3081