

Anti-Phospho-STK11-Thr189 antibody (130-210) (STJ90488)

STJ90488

GENERAL INFORMATION

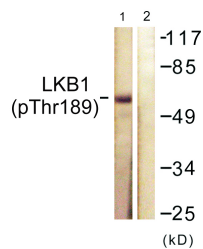
Product Type	Primary antibodies
Short Description	Rabbit polyclonal antibody anti-Phospho-Serine/Threonine-Protein Kinase Stk11-Thr189 (130-210) is suitable for use in Western Blot and ELISA research applications.
Applications	WB, ELISA
Host/Source	Rabbit
Reactivity	Human, Mouse

PRODUCT PROPERTIES

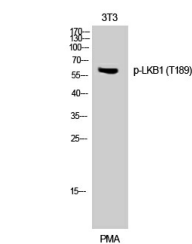
Clonality	Polyclonal
Clone ID	
Concentration	1 mg/mL
Conjugation	Unconjugated
Purification	The antibody was affinity-purified from rabbit anti-serum by affinity-chromatography.
Dilution	WB 1:500-1:2000
Range	ELISA 1:5000
Formulation	PBS, 50% Glycerol, 0.5% BSA and 0.02% Sodium Azide.
Isotype	IgG
Storage	Store at -20°C for up to 1 year from the date of receipt, and avoid repeat freeze-thaw cycles.
Instruction	

TARGET INFORMATION

Gene ID	6794
Gene Symbol	STK11
Uniprot ID	STK11_HUMAN
Immunogen	The antiserum was produced against synthesized peptide derived from human LKB1 around the phosphorylation site of Thr189 at amino acid range 155-204
Immunogen Region	130-210
Specificity	Phospho-STK11-Thr189 polyclonal antibody (Serine/Threonine-Protein Kinase Stk11) binds to endogenous Serine/Threonine-Protein Kinase Stk11 at the amino acid region 130-210 only when phosphorylated at Thr189.
Immunogen Sequence	



Western blot analysis of lysates from NIH/3T3 cells treated with PMA 125ng/ml 30', using LKB1 (Phospho-Thr189) Antibody. The lane on the right is blocked with the phospho peptide.



Western blot analysis of 3T3 cells using Phospho-LKB1 (T189) Polyclonal Antibody

This product is suitable for in-vitro studies under the RESEARCH USE ONLY [RUO] licence. This product must not be used as for diagnostic or other medical purposes.
 St John's Laboratory Ltd, Knowledge Dock Business Centre, University Way, London, E16 2RD | Tel: 0208 223 3081