

Anti-Phospho-PRKD1-Ser910 antibody (850-930) (STJ90492)

STJ90492

GENERAL INFORMATION

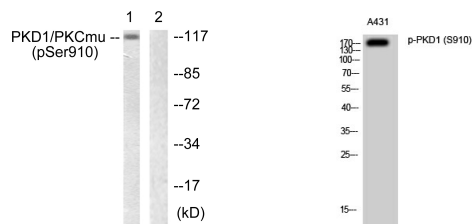
Product Type	Primary antibodies
Short Description	Rabbit polyclonal antibody anti-Phospho-Serine/Threonine-Protein Kinase D1-Ser910 (850-930) is suitable for use in Western Blot, Immunohistochemistry, Immunofluorescence and ELISA research applications.
Applications	WB, IHC-P, IF-P, ELISA
Host/Source	Rabbit
Reactivity	Human, Mouse, Rat

PRODUCT PROPERTIES

Clonality	Polyclonal
Clone ID	
Concentration	1 mg/mL
Conjugation	Unconjugated
Purification	The antibody was affinity-purified from rabbit anti-serum by affinity-chromatography.
Dilution Range	WB 1:500-1:2000 ELISA 1:10000
Formulation	PBS, 50% Glycerol, 0.5% BSA and 0.02% Sodium Azide.
Isotype	IgG
Storage Instruction	Store at -20°C for up to 1 year from the date of receipt, and avoid repeat freeze-thaw cycles.

TARGET INFORMATION

Gene ID	5587
Gene Symbol	PRKD1
Uniprot ID	KPCD1_HUMAN
Immunogen	The antiserum was produced against synthesized peptide derived from human PKD1/PKC mu around the phosphorylation site of Ser910 at amino acid range 863-912
Immunogen Region	850-930
Specificity	Phospho-PRKD1-Ser910 polyclonal antibody (Serine/Threonine-Protein Kinase D1) binds to endogenous Serine/Threonine-Protein Kinase D1 at the amino acid region 850-930 only when phosphorylated at Ser910.
Immunogen Sequence	



Western blot analysis of lysates from A431 cells, using PKD1/PKC mu (Phospho-Ser910) Antibody. The lane on the right is blocked with the phospho peptide.

Western blot analysis of A431 cells using Phospho-PKD1 (S910) Polyclonal Antibody

This product is suitable for in-vitro studies under the RESEARCH USE ONLY [RUO] licence. This product must not be used as for diagnostic or other medical purposes.
 St John's Laboratory Ltd, Knowledge Dock Business Centre, University Way, London, E16 2RD | Tel: 0208 223 3081