

Anti-Phospho-MAPK14-Thr180/Y182 antibody (120-200) (STJ90498)

STJ90498

GENERAL INFORMATION

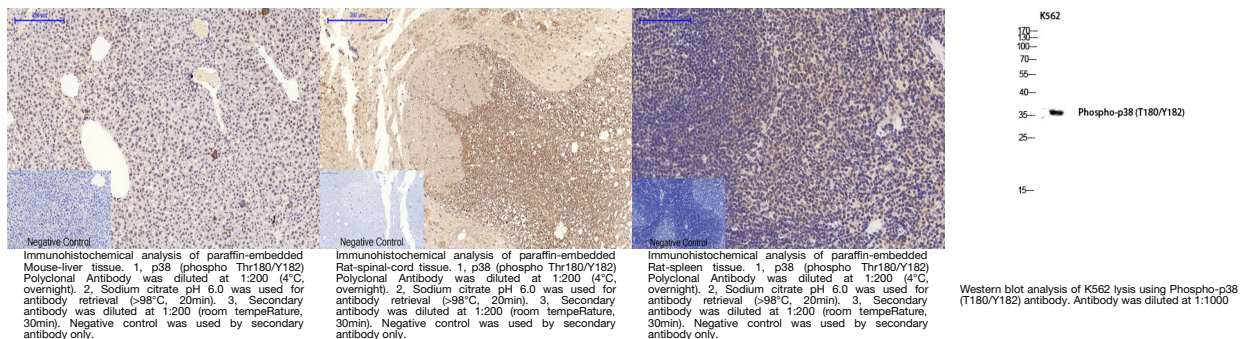
Product Type	Primary antibodies
Short Description	Rabbit polyclonal antibody anti-Phospho-Mitogen-Activated Protein Kinase 14-Thr180/Y182 (120-200) is suitable for use in Immunofluorescence, Immunocytochemistry, Western Blot, Immunohistochemistry and ELISA research applications.
Applications	IF, ICC, WB, IHC-P, ELISA
Host/Source	Rabbit
Reactivity	Human, Mouse, Rat, Guinea Pig

PRODUCT PROPERTIES

Clonality	Polyclonal
Clone ID	
Concentration	1 mg/mL
Conjugation	Unconjugated
Purification	The antibody was affinity-purified from rabbit anti-serum by affinity-chromatography.
Dilution	IF 1:50-200
Range	WB 1:500-1:2000 IHC 1:100-1:300 ELISA 1:5000
Formulation	PBS, 50% Glycerol, 0.5% BSA and 0.02% Sodium Azide.
Isotype	IgG
Storage Instruction	Store at -20°C for up to 1 year from the date of receipt, and avoid repeat freeze-thaw cycles.

TARGET INFORMATION

Gene ID	1432
Gene Symbol	MAPK14
Uniprot ID	MK14_HUMAN
Immunogen	The antiserum was produced against synthesized peptide derived from human p38 MAPK around the phosphorylation site of Thr179 and Tyr181 at amino acid range 151-200
Immunogen Region	120-200
Specificity	Phospho-MAPK14-Thr180/Y182 polyclonal antibody (Mitogen-Activated Protein Kinase 14) binds to endogenous Mitogen-Activated Protein Kinase 14 at the amino acid region 120-200 only when phosphorylated at Thr180/Y182.
Immunogen Sequence	



This product is suitable for in-vitro studies under the RESEARCH USE ONLY [RUO] licence. This product must not be used as for diagnostic or other medical purposes.
St John's Laboratory Ltd, Knowledge Dock Business Centre, University Way, London, E16 2RD | Tel: 0208 223 3081