

Anti-Phospho-RPS6KB2-Ser423 antibody (360-440) (STJ90588)

STJ90588

GENERAL INFORMATION

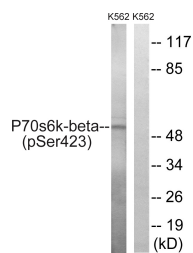
Product Type	Primary antibodies
Short Description	Rabbit polyclonal antibody anti-Phospho-Ribosomal Protein S6 Kinase Beta-2-Ser423 (360-440) is suitable for use in Western Blot and ELISA research applications.
Applications	WB, ELISA
Host/Source	Rabbit
Reactivity	Human, Mouse

PRODUCT PROPERTIES

Clonality	Polyclonal
Clone ID	
Concentration	1 mg/mL
Conjugation	Unconjugated
Purification	The antibody was affinity-purified from rabbit anti-serum by affinity-chromatography.
Dilution	WB 1:500-1:2000
Range	ELISA 1:5000
Formulation	PBS, 50% Glycerol, 0.5% BSA and 0.02% Sodium Azide.
Isotype	IgG
Storage	Store at -20°C for up to 1 year from the date of receipt, and avoid repeat freeze-thaw cycles.
Instruction	

TARGET INFORMATION

Gene ID	6199
Gene Symbol	RPS6KB2
Uniprot ID	KS6B2_HUMAN
Immunogen	The antiserum was produced against synthesized peptide derived from human p70 S6 Kinase beta around the phosphorylation site of Ser423 at amino acid range 389-438
Immunogen Region	360-440
Specificity	Phospho-RPS6KB2-Ser423 polyclonal antibody (Ribosomal Protein S6 Kinase Beta-2) binds to endogenous Ribosomal Protein S6 Kinase Beta-2 at the amino acid region 360-440 only when phosphorylated at Ser423.
Immunogen Sequence	



Western blot analysis of lysates from K562 cells treated with EGF 200ng/ml 5', using p70 S6 Kinase beta (Phospho-Ser423) Antibody. The lane on the right is blocked with the phospho peptide.