

Anti-Phospho-PRKCD-Tyr64 antibody (40-120) (STJ90593)

STJ90593

GENERAL INFORMATION

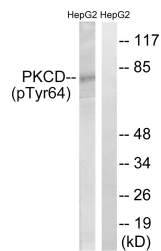
Product Type	Primary antibodies
Short Description	Rabbit polyclonal antibody anti-Phospho-Protein Kinase C Delta Type-Tyr64 (40-120) is suitable for use in Western Blot and ELISA research applications.
Applications	WB, ELISA
Host/Source	Rabbit
Reactivity	Human, Mouse, Rat

PRODUCT PROPERTIES

Clonality	Polyclonal
Clone ID	
Concentration	1 mg/mL
Conjugation	Unconjugated
Purification	The antibody was affinity-purified from rabbit anti-serum by affinity-chromatography.
Dilution Range	WB 1:500-1:2000 ELISA 1:10000
Formulation	PBS, 50% Glycerol, 0.5% BSA and 0.02% Sodium Azide.
Isotype	IgG
Storage	Store at -20°C for up to 1 year from the date of receipt, and avoid repeat freeze-thaw cycles.
Instruction	

TARGET INFORMATION

Gene ID	5580
Gene Symbol	PRKCD
Uniprot ID	KPCD_HUMAN
Immunogen	The antiserum was produced against synthesized peptide derived from human PKCD around the phosphorylation site of Tyr64 at amino acid range 30-79
Immunogen Region	40-120
Specificity	Phospho-PRKCD-Tyr64 polyclonal antibody (Protein Kinase C Delta Type) binds to endogenous Protein Kinase C Delta Type at the amino acid region 40-120 only when phosphorylated at Tyr64.
Immunogen Sequence	



Western blot analysis of lysates from HepG2 cells treated with PMA 125ng/ml 30', using PKCD (Phospho-Tyr64) Antibody. The lane on the right is blocked with the phospho peptide.