

Anti-Phospho-DPYSL2-Ser522 antibody (460-540) (STJ90673)

STJ90673

GENERAL INFORMATION

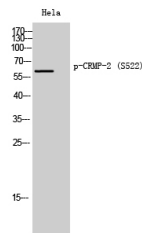
Product Type	Primary antibodies
Short Description	Rabbit polyclonal antibody anti-Phospho-Dihydropyrimidinase-Related Protein 2-Ser522 (460-540) is suitable for use in Western Blot and ELISA research applications.
Applications	WB, ELISA
Host/Source	Rabbit
Reactivity	Human, Mouse, Rat

PRODUCT PROPERTIES

Clonality	Polyclonal
Clone ID	
Concentration	1 mg/mL
Conjugation	Unconjugated
Purification	The antibody was affinity-purified from rabbit anti-serum by affinity-chromatography.
Dilution	WB 1:500-1:2000
Range	ELISA 1:10000
Formulation	PBS, 50% Glycerol, 0.5% BSA and 0.02% Sodium Azide.
Isotype	IgG
Storage Instruction	Store at -20°C for up to 1 year from the date of receipt, and avoid repeat freeze-thaw cycles.

TARGET INFORMATION

Gene ID	1808
Gene Symbol	DPYSL2
Uniprot ID	DPYL2_HUMAN
Immunogen	Synthesized phospho-peptide around the phosphorylation site of human CRMP-2 (phospho Ser522)
Immunogen Region	460-540
Specificity	Phospho-DPYSL2-Ser522 polyclonal antibody (Dihydropyrimidinase-Related Protein 2) binds to endogenous Dihydropyrimidinase-Related Protein 2 at the amino acid region 460-540 only when phosphorylated at Ser522.
Immunogen Sequence	



Western blot analysis of HeLa cells using Phospho-CRMP-2 (S522) Polyclonal Antibody diluted at 1 : 2000

This product is suitable for in-vitro studies under the RESEARCH USE ONLY [RUO] licence. This product must not be used as for diagnostic or other medical purposes.
 St John's Laboratory Ltd, Knowledge Dock Business Centre, University Way, London, E16 2RD | Tel: 0208 223 3081