

## Anti-Phospho-PTK2-Tyr397 antibody (340-420) (STJ90675)

STJ90675

### GENERAL INFORMATION

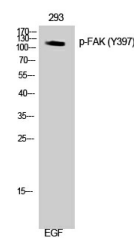
<b>Product Type</b>	Primary antibodies
<b>Short Description</b>	Rabbit polyclonal antibody anti-Phospho-Focal Adhesion Kinase 1-Tyr397 (340-420) is suitable for use in Western Blot and ELISA research applications.
<b>Applications</b>	WB, ELISA
<b>Host/Source</b>	Rabbit
<b>Reactivity</b>	Human, Mouse, Rat

### PRODUCT PROPERTIES

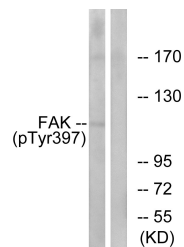
<b>Clonality</b>	Polyclonal
<b>Clone ID</b>	
<b>Concentration</b>	1 mg/mL
<b>Conjugation</b>	Unconjugated
<b>Purification</b>	The antibody was affinity-purified from rabbit anti-serum by affinity-chromatography.
<b>Dilution Range</b>	WB 1:500-1:2000 ELISA 1:5000
<b>Formulation</b>	PBS, 50% Glycerol, 0.5% BSA and 0.02% Sodium Azide.
<b>Isotype</b>	IgG
<b>Storage Instruction</b>	Store at -20°C for up to 1 year from the date of receipt, and avoid repeat freeze-thaw cycles.

### TARGET INFORMATION

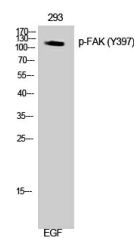
<b>Gene ID</b>	5747
<b>Gene Symbol</b>	PTK2
<b>Uniprot ID</b>	FAK1_HUMAN
<b>Immunogen</b>	The antiserum was produced against synthesized peptide derived from human FAK around the phosphorylation site of Tyr397 at amino acid range 364-413
<b>Immunogen Region</b>	340-420
<b>Specificity</b>	Phospho-PTK2-Tyr397 polyclonal antibody (Focal Adhesion Kinase 1) binds to endogenous Focal Adhesion Kinase 1 at the amino acid region 340-420 only when phosphorylated at Tyr397.
<b>Immunogen Sequence</b>	



Western blot analysis of 293 cells using Phospho-FAK (Y397) Polyclonal Antibody



Western blot analysis of lysates from 293 cells treated with EGF 200ng/ml 30', using FAK (Phospho-Tyr397) Antibody. The lane on the right is blocked with the phospho-peptide.



Western blot analysis of 293 cells using Phospho-FAK (Y397) Polyclonal Antibody

This product is suitable for in-vitro studies under the RESEARCH USE ONLY [RUO] licence. This product must not be used as for diagnostic or other medical purposes.  
St John's Laboratory Ltd, Knowledge Dock Business Centre, University Way, London, E16 2RD | Tel: 0208 223 3081