

Anti-Phospho-ABL1-Tyr245 antibody (170-250) (STJ90694)

STJ90694

GENERAL INFORMATION

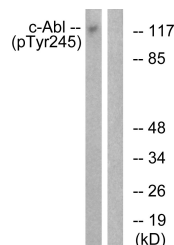
Product Type	Primary antibodies
Short Description	Rabbit polyclonal antibody anti-Phospho-Tyrosine-Protein Kinase Abl1-Tyr245 (170-250) is suitable for use in Western Blot, Immunofluorescence, Immunocytochemistry and ELISA research applications.
Applications	WB, IF, ICC, ELISA
Host/Source	Rabbit
Reactivity	Human, Mouse, Rat

PRODUCT PROPERTIES

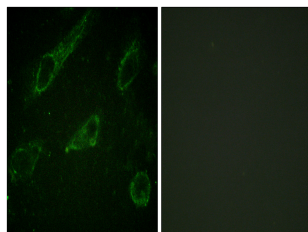
Clonality	Polyclonal
Clone ID	
Concentration	1 mg/mL
Conjugation	Unconjugated
Purification	The antibody was affinity-purified from rabbit anti-serum by affinity-chromatography.
Dilution	WB 1:500-1:2000
Range	IF 1:200-1:1000 ELISA 1:5000
Formulation	PBS, 50% Glycerol, 0.5% BSA and 0.02% Sodium Azide.
Isotype	IgG
Storage Instruction	Store at -20°C for up to 1 year from the date of receipt, and avoid repeat freeze-thaw cycles.

TARGET INFORMATION

Gene ID	25
Gene Symbol	ABL1
Uniprot ID	ABL1_HUMAN
Immunogen	The antiserum was produced against synthesized peptide derived from human c-Abl around the phosphorylation site of Tyr245 at amino acid range 196-245
Immunogen Region	170-250
Specificity	Phospho-ABL1-Tyr245 polyclonal antibody (Tyrosine-Protein Kinase Abl1) binds to endogenous Tyrosine-Protein Kinase Abl1 at the amino acid region 170-250 only when phosphorylated at Tyr245.
Immunogen Sequence	



Western blot analysis of lysates from K562 cells treated with Insulin 0.01U/ml 15, using c-Abl (Phospho-Tyr245) Antibody. The lane on the right is blocked with the phospho peptide.



Immunofluorescence analysis of HeLa cells, using c-Abl (Phospho-Tyr245) Antibody. The picture on the right is blocked with the phospho peptide.

This product is suitable for in-vitro studies under the RESEARCH USE ONLY [RUO] licence. This product must not be used as for diagnostic or other medical purposes.
St John's Laboratory Ltd, Knowledge Dock Business Centre, University Way, London, E16 2RD | Tel: 0208 223 3081