

Anti-Phospho-HSP90AB1-Ser226 antibody (180-260) (STJ90725)

STJ90725

GENERAL INFORMATION

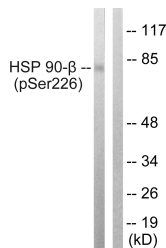
Product Type	Primary antibodies
Short Description	Rabbit polyclonal antibody anti-Phospho-Heat Shock Protein Hsp 90-Beta-Ser226 (180-260) is suitable for use in Western Blot, Immunohistochemistry, Immunofluorescence, Immunocytochemistry and ELISA research applications.
Applications	WB, IHC-P, IF, ICC, ELISA
Host/Source	Rabbit
Reactivity	Human, Mouse, Rat

PRODUCT PROPERTIES

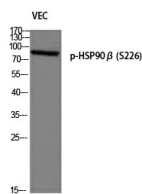
Clonality	Polyclonal
Clone ID	
Concentration	1 mg/mL
Conjugation	Unconjugated
Purification	The antibody was affinity-purified from rabbit anti-serum by affinity-chromatography.
Dilution	WB 1:500-1:2000
Range	IHC 1:100-1:300 IF 1:200-1:1000 ELISA 1:10000
Formulation	PBS, 50% Glycerol, 0.5% BSA and 0.02% Sodium Azide.
Isotype	IgG
Storage Instruction	Store at -20°C for up to 1 year from the date of receipt, and avoid repeat freeze-thaw cycles.

TARGET INFORMATION

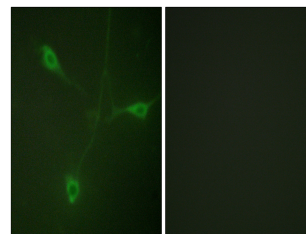
Gene ID	3326
Gene Symbol	HSP90AB1
Uniprot ID	HS90B_HUMAN
Immunogen	The antiserum was produced against synthesized peptide derived from human HSP90B around the phosphorylation site of Ser226 at amino acid range 201-250
Immunogen Region	180-260
Specificity	Phospho-HSP90AB1-Ser226 polyclonal antibody (Heat Shock Protein Hsp 90-Beta) binds to endogenous Heat Shock Protein Hsp 90-Beta at the amino acid region 180-260 only when phosphorylated at Ser226.
Immunogen Sequence	



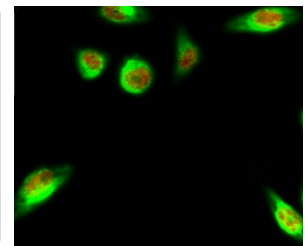
Western blot analysis of lysates from A549 cells treated with serum 20% 15', using HSP90B (Phospho-Ser226) Antibody. The lane on the right is blocked with the phospho peptide.



Western blot analysis of VEC using p-HSP90 Beta (S226) antibody.



Immunofluorescence analysis of NIH/3T3 cells, using HSP90B (Phospho-Ser226) Antibody. The picture on the right is blocked with the phospho peptide.



Immunofluorescence analysis of HeLa cell. 1, HSP90 Beta (phospho Ser226) Polyclonal Antibody (red) was diluted at 1:200 (4°C overnight). CK7 monoclonal antibody (12D7) (green) was diluted at 1:200 (4°C overnight). 2, Goat Anti Rabbit Alexa Fluor 594 Catalog: (NA was diluted at 1:1000 (room temperature, 50min). Goat Anti Mouse Alexa Fluor 488 Catalog: (NA was diluted at 1:1000 (room temperature, 50min).