

## Anti-Phospho-RPS6KA1-Thr359/S363 antibody (300-380) (STJ90825)

STJ90825

### GENERAL INFORMATION

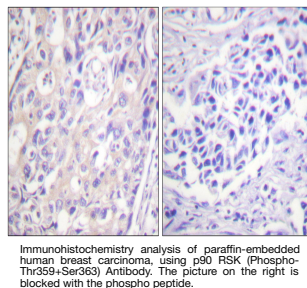
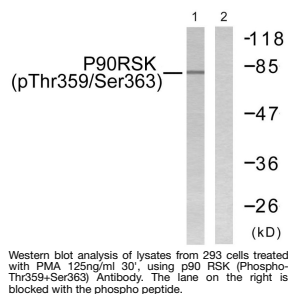
<b>Product Type</b>	Primary antibodies
<b>Short Description</b>	Rabbit polyclonal antibody anti-Phospho-Ribosomal Protein S6 Kinase Alpha-1-Thr359/S363 (300-380) is suitable for use in Western Blot, Immunohistochemistry, Immunofluorescence and ELISA research applications.
<b>Applications</b>	WB, IHC-P, IF-P, ELISA
<b>Host/Source</b>	Rabbit
<b>Reactivity</b>	Human, Mouse, Rat

### PRODUCT PROPERTIES

<b>Clonality</b>	Polyclonal
<b>Clone ID</b>	
<b>Concentration</b>	1 mg/mL
<b>Conjugation</b>	Unconjugated
<b>Purification</b>	The antibody was affinity-purified from rabbit anti-serum by affinity-chromatography.
<b>Dilution Range</b>	WB 1:500-1:2000 IHC 1:100-1:300 ELISA 1:5000
<b>Formulation</b>	PBS, 50% Glycerol, 0.5% BSA and 0.02% Sodium Azide.
<b>Isotype</b>	IgG
<b>Storage Instruction</b>	Store at -20°C for up to 1 year from the date of receipt, and avoid repeat freeze-thaw cycles.

### TARGET INFORMATION

<b>Gene ID</b>	6195
<b>Gene Symbol</b>	RPS6KA1
<b>Uniprot ID</b>	KS6A1_HUMAN
<b>Immunogen</b>	The antiserum was produced against synthesized peptide derived from human p90 RSK around the phosphorylation site of Thr359 and Ser363 at amino acid range 331-380
<b>Immunogen Region</b>	300-380
<b>Specificity</b>	Phospho-RPS6KA1-Thr359/S363 polyclonal antibody (Ribosomal Protein S6 Kinase Alpha-1) binds to endogenous Ribosomal Protein S6 Kinase Alpha-1 at the amino acid region 300-380 only when phosphorylated at Thr359/S363.
<b>Immunogen Sequence</b>	



This product is suitable for in-vitro studies under the RESEARCH USE ONLY [RUO] licence. This product must not be used as for diagnostic or other medical purposes.  
St John's Laboratory Ltd, Knowledge Dock Business Centre, University Way, London, E16 2RD | Tel: 0208 223 3081