

Anti-Phospho-PRKCD-Tyr313 antibody (250-330) (STJ90864)

STJ90864

GENERAL INFORMATION

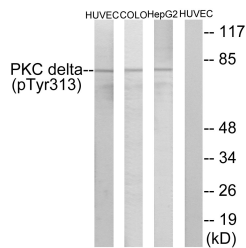
Product Type	Primary antibodies
Short Description	Rabbit polyclonal antibody anti-Phospho-Protein Kinase C Delta Type-Tyr313 (250-330) is suitable for use in Western Blot, Immunohistochemistry, Immunofluorescence, Immunocytochemistry and ELISA research applications.
Applications	WB, IHC-P, IF, ICC, ELISA
Host/Source	Rabbit
Reactivity	Human, Mouse, Rat

PRODUCT PROPERTIES

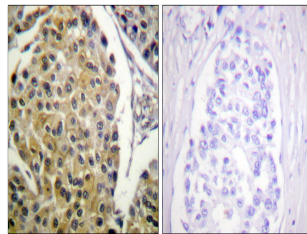
Clonality	Polyclonal
Clone ID	
Concentration	1 mg/mL
Conjugation	Unconjugated
Purification	The antibody was affinity-purified from rabbit anti-serum by affinity-chromatography.
Dilution Range	WB 1:500-1:2000 IHC 1:100-1:300 IF 1:200-1:1000 ELISA 1:10000
Formulation	PBS, 50% Glycerol, 0.5% BSA and 0.02% Sodium Azide.
Isotype	IgG
Storage Instruction	Store at -20°C for up to 1 year from the date of receipt, and avoid repeat freeze-thaw cycles.

TARGET INFORMATION

Gene ID	5580
Gene Symbol	PRKCD
Uniprot ID	KPCD_HUMAN
Immunogen	The antiserum was produced against synthesized peptide derived from human PKC delta around the phosphorylation site of Tyr313 at amino acid range 279-328
Immunogen Region	250-330
Specificity	Phospho-PRKCD-Tyr313 polyclonal antibody (Protein Kinase C Delta Type) binds to endogenous Protein Kinase C Delta Type at the amino acid region 250-330 only when phosphorylated at Tyr313.
Immunogen Sequence	



Western blot analysis of lysates from HepG2 cells, COLQ205 cells and HUVEC cells, using PKC delta (Phospho-Tyr313) Antibody. The lane on the right is blocked with the phospho peptide.



Immunohistochemistry analysis of paraffin-embedded human breast carcinoma, using PKC delta (Phospho-Tyr313) Antibody. The picture on the right is blocked with the phospho peptide.

This product is suitable for in-vitro studies under the RESEARCH USE ONLY [RUO] licence. This product must not be used as for diagnostic or other medical purposes.
St John's Laboratory Ltd, Knowledge Dock Business Centre, University Way, London, E16 2RD | Tel: 0208 223 3081