

Anti-Phospho-AXL-Tyr691 antibody (630-710) (STJ90939)

STJ90939

GENERAL INFORMATION

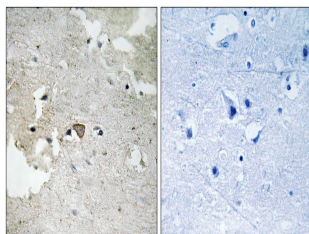
Product Type	Primary antibodies
Short Description	Rabbit polyclonal antibody anti-Phospho-Tyrosine-Protein Kinase Receptor Ufo-Tyr691 (630-710) is suitable for use in Western Blot, Immunohistochemistry, Immunofluorescence and ELISA research applications.
Applications	WB, IHC-P, IF-P, ELISA
Host/Source	Rabbit
Reactivity	Human, Mouse, Rat

PRODUCT PROPERTIES

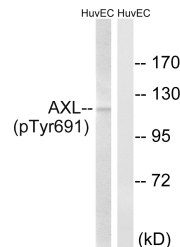
Clonality	Polyclonal
Clone ID	
Concentration	1 mg/mL
Conjugation	Unconjugated
Purification	The antibody was affinity-purified from rabbit anti-serum by affinity-chromatography.
Dilution Range	WB 1:500-1:2000 IHC 1:100-1:300 ELISA 1:20000
Formulation	PBS, 50% Glycerol, 0.5% BSA and 0.02% Sodium Azide.
Isotype	IgG
Storage Instruction	Store at -20°C for up to 1 year from the date of receipt, and avoid repeat freeze-thaw cycles.

TARGET INFORMATION

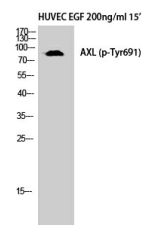
Gene ID	558
Gene Symbol	AXL
Uniprot ID	UFO_HUMAN
Immunogen	The antiserum was produced against synthesized peptide derived from human AXL around the phosphorylation site of Tyr691 at amino acid range 657-706
Immunogen Region	630-710
Specificity	Phospho-AXL-Tyr691 polyclonal antibody (Tyrosine-Protein Kinase Receptor Ufo) binds to endogenous Tyrosine-Protein Kinase Receptor Ufo at the amino acid region 630-710 only when phosphorylated at Tyr691.
Immunogen Sequence	



Immunohistochemistry analysis of paraffin-embedded human brain, using AXL (Phospho-Tyr691) Antibody. The picture on the right is blocked with the phospho-peptide.



Western blot analysis of lysates from HUVEC cells treated with EGF 200ng/ml 15', using AXL (Phospho-Tyr691) Antibody. The lane on the right is blocked with the phospho-peptide.



Western blot analysis of HUVEC cells using Phospho-Axl (Y691) Polyclonal Antibody diluted at 1: 500

This product is suitable for in-vitro studies under the RESEARCH USE ONLY [RUO] licence. This product must not be used as for diagnostic or other medical purposes.
St John's Laboratory Ltd, Knowledge Dock Business Centre, University Way, London, E16 2RD | Tel: 0208 223 3081