

Anti-Phospho-DPYSL2-Thr509 antibody (450-530) (STJ90974)

STJ90974

GENERAL INFORMATION

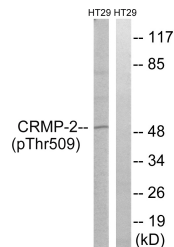
Product Type	Primary antibodies
Short Description	Rabbit polyclonal antibody anti-Phospho-Dihydropyrimidinase-Related Protein 2-Thr509 (450-530) is suitable for use in Western Blot, Immunohistochemistry, Immunofluorescence and ELISA research applications.
Applications	WB, IHC-P, IF-P, ELISA
Host/Source	Rabbit
Reactivity	Human, Mouse, Rat

PRODUCT PROPERTIES

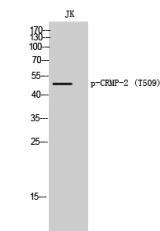
Clonality	Polyclonal
Clone ID	
Concentration	1 mg/mL
Conjugation	Unconjugated
Purification	The antibody was affinity-purified from rabbit anti-serum by affinity-chromatography.
Dilution Range	WB 1:500-1:2000 IHC 1:100-1:300 ELISA 1:5000
Formulation	PBS, 50% Glycerol, 0.5% BSA and 0.02% Sodium Azide.
Isotype	IgG
Storage Instruction	Store at -20°C for up to 1 year from the date of receipt, and avoid repeat freeze-thaw cycles.

TARGET INFORMATION

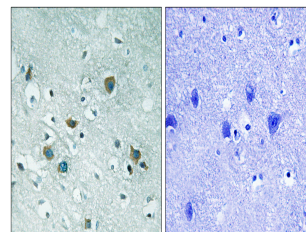
Gene ID	1808
Gene Symbol	DPYSL2
Uniprot ID	DPYL2_HUMAN
Immunogen	The antiserum was produced against synthesized peptide derived from human CRMP-2 around the phosphorylation site of Thr509 at amino acid range 475-524
Immunogen Region	450-530
Specificity	Phospho-DPYSL2-Thr509 polyclonal antibody (Dihydropyrimidinase-Related Protein 2) binds to endogenous Dihydropyrimidinase-Related Protein 2 at the amino acid region 450-530 only when phosphorylated at Thr509.
Immunogen Sequence	



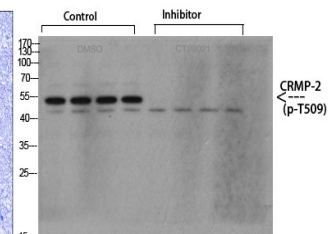
Western blot analysis of lysates from HT29 cells treated with heat shock, using CRMP-2 (Phospho-Thr509) Antibody. The lane on the right is blocked with the phospho peptide.



Western blot analysis of JK cells using Phospho-CRMP-2 (T509) Polyclonal Antibody



Immunohistochemistry analysis of paraffin-embedded human brain, using CRMP-2 (Phospho-Thr509) Antibody. The picture on the right is blocked with the phospho peptide.



Western blot analysis of various cells using primary antibody diluted at 1:1000 (4°C overnight). Secondary antibody: Goat Anti-rabbit IgG IRDye 800 (diluted at 1:5000, 25°C, 1 hour). Cell lysate was extracted by Minute Plasma Membrane Protein Isolation and Cell Fractionation Kit (SM-005, Inventibiotech, MN, USA).