

Anti-Phospho-DNM1L-Ser637 antibody (580-660) (STJ91001)

STJ91001

GENERAL INFORMATION

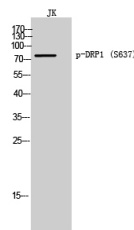
Product Type	Primary antibodies
Short Description	Rabbit polyclonal antibody anti-Phospho-Dynamin-1-Like Protein-Ser637 (580-660) is suitable for use in Western Blot, Immunohistochemistry, Immunofluorescence and ELISA research applications.
Applications	WB, IHC-P, IF-P, ELISA
Host/Source	Rabbit
Reactivity	Human, Mouse, Rat

PRODUCT PROPERTIES

Clonality	Polyclonal
Clone ID	
Concentration	1 mg/mL
Conjugation	Unconjugated
Purification	The antibody was affinity-purified from rabbit anti-serum by affinity-chromatography.
Dilution Range	WB 1:500-1:2000 IHC 1:100-1:300 ELISA 1:10000
Formulation	PBS, 50% Glycerol, 0.5% BSA and 0.02% Sodium Azide.
Isotype	IgG
Storage Instruction	Store at -20°C for up to 1 year from the date of receipt, and avoid repeat freeze-thaw cycles.

TARGET INFORMATION

Gene ID	10059
Gene Symbol	DNM1L
Uniprot ID	DNM1L_HUMAN
Immunogen Region	Synthesized phospho-peptide around the phosphorylation site of human DRP1 (phospho Ser637) 580-660
Specificity	Phospho-DNM1L-Ser637 polyclonal antibody (Dynamin-1-Like Protein) binds to endogenous Dynamin-1-Like Protein at the amino acid region 580-660 only when phosphorylated at Ser637.
Immunogen Sequence	



Western blot analysis of JK cells using Phospho-DRP1 (S637) Polyclonal Antibody

This product is suitable for in-vitro studies under the RESEARCH USE ONLY [RUO] licence. This product must not be used as for diagnostic or other medical purposes.
St John's Laboratory Ltd, Knowledge Dock Business Centre, University Way, London, E16 2RD | Tel: 0208 223 3081