

Anti-Phospho-CAD-Thr456 antibody (400-480) (STJ91243)

STJ91243

GENERAL INFORMATION

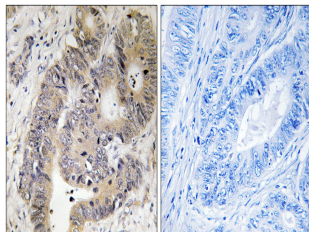
Product Type	Primary antibodies
Short Description	Rabbit polyclonal antibody anti-Phospho-Cad Protein Includes-Glutamine-Dependent Carbamoyl-Phosphate Synthase-Aspartate Carbamoyltransferase-Dihydroorotase-Thr456 (400-480) is suitable for use in Immunohistochemistry, Immunofluorescence and ELISA res
Applications	IHC-P, IF-P, ELISA
Host/Source	Rabbit
Reactivity	Human, Mouse

PRODUCT PROPERTIES

Clonality	Polyclonal
Clone ID	
Concentration	1 mg/mL
Conjugation	Unconjugated
Purification	The antibody was affinity-purified from rabbit anti-serum by affinity-chromatography.
Dilution	IHC 1:100-1:300
Range	ELISA 1:5000
Formulation	PBS, 50% Glycerol, 0.5% BSA and 0.02% Sodium Azide.
Isotype	IgG
Storage Instruction	Store at -20°C for up to 1 year from the date of receipt, and avoid repeat freeze-thaw cycles.

TARGET INFORMATION

Gene ID	790
Gene Symbol	CAD
Uniprot ID	PYR1_HUMAN
Immunogen	The antiserum was produced against synthesized peptide derived from human CAD around the phosphorylation site of Thr456 at amino acid range 422-471
Immunogen Region	400-480
Specificity	Phospho-CAD-Thr456 polyclonal antibody (Cad Protein Includes-Glutamine-Dependent Carbamoyl-Phosphate Synthase-Aspartate Carbamoyltransferase-Dihydroorotase) binds to endogenous Cad Protein Includes-Glutamine-Dependent Carbamoyl-Phosphate Synthase-Asp
Immunogen Sequence	



Immunohistochemistry analysis of paraffin-embedded human colon carcinoma, using CAD (Phospho-Thr456) Antibody. The picture on the right is blocked with the phospho peptide.