

Anti-Phospho-PTK2-Ser910 antibody (850-930) (STJ91306)

STJ91306

GENERAL INFORMATION

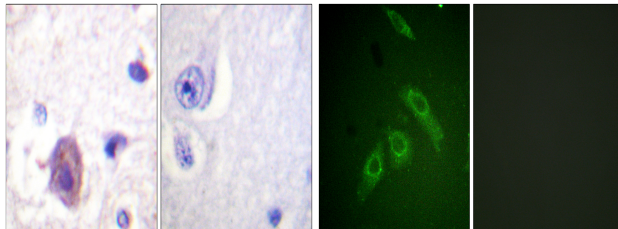
Product Type	Primary antibodies
Short Description	Rabbit polyclonal antibody anti-Phospho-Focal Adhesion Kinase 1-Ser910 (850-930) is suitable for use in Immunohistochemistry, Immunofluorescence, Immunocytochemistry and ELISA research applications.
Applications	IHC-P, IF, ICC, ELISA
Host/Source	Rabbit
Reactivity	Human, Mouse, Rat

PRODUCT PROPERTIES

Clonality	Polyclonal
Clone ID	
Concentration	1 mg/mL
Conjugation	Unconjugated
Purification	The antibody was affinity-purified from rabbit anti-serum by affinity-chromatography.
Dilution	IHC 1:100-1:300
Range	IF 1:200-1:1000 ELISA 1:5000
Formulation	PBS, 50% Glycerol, 0.5% BSA and 0.02% Sodium Azide.
Isotype	IgG
Storage Instruction	Store at -20°C for up to 1 year from the date of receipt, and avoid repeat freeze-thaw cycles.

TARGET INFORMATION

Gene ID	5747
Gene Symbol	PTK2
Uniprot ID	FAK1_HUMAN
Immunogen	The antiserum was produced against synthesized peptide derived from human FAK around the phosphorylation site of Ser910 at amino acid range 876-925
Immunogen Region	850-930
Specificity	Phospho-PTK2-Ser910 polyclonal antibody (Focal Adhesion Kinase 1) binds to endogenous Focal Adhesion Kinase 1 at the amino acid region 850-930 only when phosphorylated at Ser910.
Immunogen Sequence	



Immunohistochemistry analysis of paraffin-embedded human brain, using FAK (Phospho-Ser910) Antibody. The picture on the right is blocked with the phospho peptide.

Immunofluorescence analysis of HepG2 cells, using FAK (Phospho-Ser910) Antibody. The picture on the right is blocked with the phospho peptide.

This product is suitable for in-vitro studies under the RESEARCH USE ONLY [RUO] licence. This product must not be used as for diagnostic or other medical purposes.
St John's Laboratory Ltd, Knowledge Dock Business Centre, University Way, London, E16 2RD | Tel: 0208 223 3081