

Anti-ADNP antibody (80-160 N-Term) (STJ91502)

STJ91502

GENERAL INFORMATION

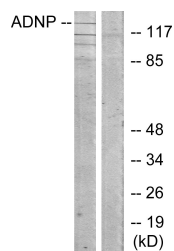
Product Type	Primary antibodies
Short Description	Rabbit polyclonal antibody anti-Activity-Dependent Neuroprotector Homeobox Protein (80-160 N-Term) is suitable for use in Western Blot, Immunohistochemistry, Immunofluorescence and ELISA research applications.
Applications	WB, IHC-P, IF-P, ELISA
Host/Source	Rabbit
Reactivity	Human, Mouse

PRODUCT PROPERTIES

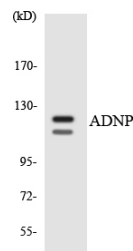
Clonality	Polyclonal
Clone ID	
Concentration	1 mg/mL
Conjugation	Unconjugated
Purification	The antibody was affinity-purified from rabbit anti-serum by affinity-chromatography.
Dilution Range	WB 1:500-1:2000 IHC 1:100-1:300 ELISA 1:5000
Formulation	PBS, 50% Glycerol, 0.5% BSA and 0.02% Sodium Azide.
Isotype	IgG
Storage Instruction	Store at -20°C for up to 1 year from the date of receipt, and avoid repeat freeze-thaw cycles.

TARGET INFORMATION

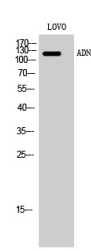
Gene ID	23394
Gene Symbol	ADNP
Uniprot ID	ADNP_HUMAN
Immunogen	The antiserum was produced against synthesized peptide derived from human ADNP at amino acid range 111-160
Immunogen Region	80-160 N-Term
Specificity	ADNP polyclonal antibody (Activity-Dependent Neuroprotector Homeobox Protein) binds to endogenous Activity-Dependent Neuroprotector Homeobox Protein at the amino acid region 80-160 N-Term.
Immunogen Sequence	



Western blot analysis of lysates from LOVO cells, using ADNP Antibody. The lane on the right is blocked with the synthesized peptide.



Western blot analysis of the lysates from K562 cells using ADNP antibody.



Western blot analysis of LOVO cells using ADNP Polyclonal Antibody cells nucleus extracted by Minute™ Cytoplasmic and Nuclear Fractionation kit (SC-003, Inventorbiotech, MN, USA).

This product is suitable for in-vitro studies under the RESEARCH USE ONLY [RUO] licence. This product must not be used as for diagnostic or other medical purposes.
St John's Laboratory Ltd, Knowledge Dock Business Centre, University Way, London, E16 2RD | Tel: 0208 223 3081