

Anti-AGTR1 antibody (80-160 Internal) (STJ91737)

STJ91737

GENERAL INFORMATION

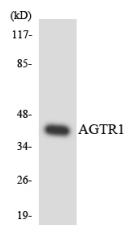
Product Type	Primary antibodies
Short Description	Rabbit polyclonal antibody anti-Type-1 Angiotensin II Receptor (80-160 Internal) is suitable for use in Western Blot, Immunohistochemistry, Immunofluorescence, Immunocytochemistry and ELISA research applications.
Applications	WB, IHC-P, IF, ICC, ELISA
Host/Source	Rabbit
Reactivity	Human, Mouse, Rat

PRODUCT PROPERTIES

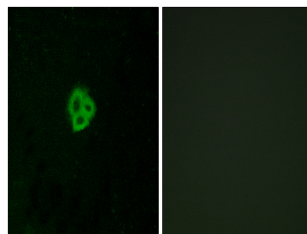
Clonality	Polyclonal
Clone ID	
Concentration	1 mg/mL
Conjugation	Unconjugated
Purification	The antibody was affinity-purified from rabbit anti-serum by affinity-chromatography.
Dilution Range	WB 1:500-1:2000 IHC 1:100-1:300 IF 1:200-1:1000 ELISA 1:10000
Formulation	PBS, 50% Glycerol, 0.5% BSA and 0.02% Sodium Azide.
Isotype	IgG
Storage Instruction	Store at -20°C for up to 1 year from the date of receipt, and avoid repeat freeze-thaw cycles.

TARGET INFORMATION

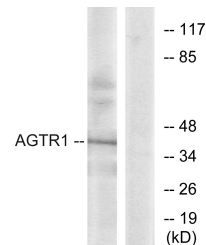
Gene ID	185
Gene Symbol	AGTR1
Uniprot ID	AGTR1_HUMAN
Immunogen	The antiserum was produced against synthesized peptide derived from human AGTR1 at amino acid range 101-150
Immunogen Region	80-160 Internal
Specificity	AGTR1 polyclonal antibody (Type-1 Angiotensin II Receptor) binds to endogenous Type-1 Angiotensin II Receptor at the amino acid region 80-160 Internal.
Immunogen Sequence	



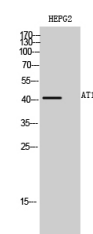
Western blot analysis of the lysates from HeLa cells using AGTR1 antibody.



Immunofluorescence analysis of MCF7 cells, using AGTR1 Antibody. The picture on the right is blocked with the synthesized peptide.



Western blot analysis of lysates from K562 cells, using AGTR1 Antibody. The lane on the right is blocked with the synthesized peptide.



Western blot analysis of HEPG2 cells using AT1 Polyclonal Antibody diluted at 1: 500

This product is suitable for in-vitro studies under the RESEARCH USE ONLY [RUO] licence. This product must not be used as for diagnostic or other medical purposes.
St John's Laboratory Ltd, Knowledge Dock Business Centre, University Way, London, E16 2RD | Tel: 0208 223 3081