

Anti-CASP3 antibody (90-170) (STJ92021)

STJ92021

GENERAL INFORMATION

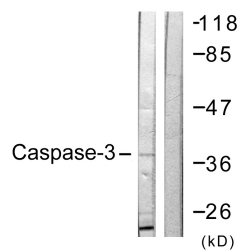
Product Type	Primary antibodies
Short Description	Rabbit polyclonal antibody anti-Caspase-3 (90-170) is suitable for use in Western Blot, Immunohistochemistry, Immunofluorescence, Immunocytochemistry and ELISA research applications.
Applications	WB, IHC-P, IF, ICC, ELISA
Host/Source	Rabbit
Reactivity	Human, Mouse, Rat

PRODUCT PROPERTIES

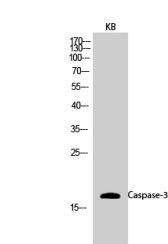
Clonality	Polyclonal
Clone ID	
Concentration	1 mg/mL
Conjugation	Unconjugated
Purification	The antibody was affinity-purified from rabbit anti-serum by affinity-chromatography.
Dilution Range	WB 1:500-1:2000 IHC 1:100-1:300 IF 1:200-1:1000 ELISA 1:5000
Formulation	PBS, 50% Glycerol, 0.5% BSA and 0.02% Sodium Azide.
Isotype	IgG
Storage Instruction	Store at -20°C for up to 1 year from the date of receipt, and avoid repeat freeze-thaw cycles.

TARGET INFORMATION

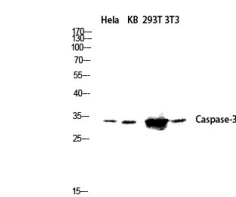
Gene ID	836
Gene Symbol	CASP3
Uniprot ID	CASP3_HUMAN
Immunogen	The antiserum was produced against synthesized peptide derived from human Caspase 3 at amino acid range 116-165
Immunogen Region	90-170
Specificity	CASP3 polyclonal antibody (Caspase-3) binds to endogenous Caspase-3 at the amino acid region 90-170.
Immunogen Sequence	



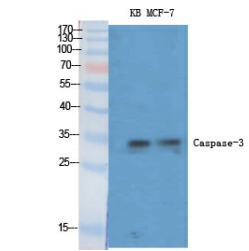
Western blot analysis of lysates from NIH/3T3 cells, treated with Etoposide 25uM 24h, using Caspase 3 Antibody. The lane on the right is blocked with the synthesized peptide.



Western blot analysis of KB cells using Caspase-3 Polyclonal Antibody diluted at 1: 1000



Western blot analysis of HeLa KB 293T 3T3 lysis using Caspase-3 antibody. Antibody was diluted at 1:1000



Western blot analysis of various cells using Caspase-3 Polyclonal Antibody diluted at 1: 1000

This product is suitable for in-vitro studies under the RESEARCH USE ONLY [RUO] licence. This product must not be used as for diagnostic or other medical purposes.
St John's Laboratory Ltd, Knowledge Dock Business Centre, University Way, London, E16 2RD | Tel: 0208 223 3081