

Anti-CTSB antibody (Internal) (STJ92044)

STJ92044

GENERAL INFORMATION

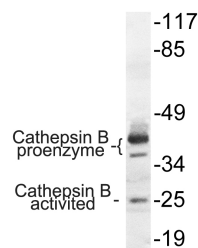
Product Type	Primary antibodies
Short Description	Rabbit polyclonal antibody anti-Cathepsin B (Internal) is suitable for use in Western Blot, Immunohistochemistry, Immunofluorescence and ELISA research applications.
Applications	WB, IHC-P, IF-P, ELISA
Host/Source	Rabbit
Reactivity	Human, Mouse, Rat

PRODUCT PROPERTIES

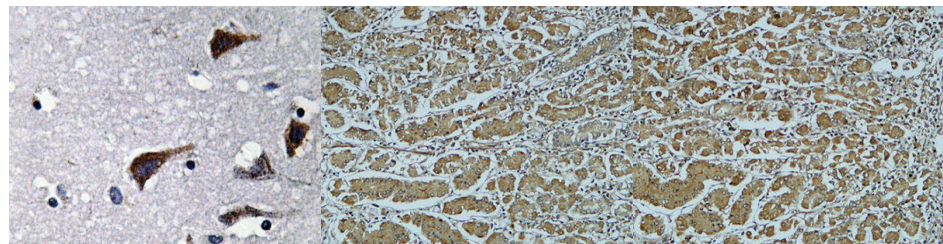
Clonality	Polyclonal
Clone ID	
Concentration	1 mg/mL
Conjugation	Unconjugated
Purification	The antibody was affinity-purified from rabbit anti-serum by affinity-chromatography.
Dilution Range	WB 1:500-1:2000 IHC 1:100-1:300 ELISA 1:5000
Formulation	PBS, 50% Glycerol, 0.5% BSA and 0.02% Sodium Azide.
Isotype	IgG
Storage Instruction	Store at -20°C for up to 1 year from the date of receipt, and avoid repeat freeze-thaw cycles.

TARGET INFORMATION

Gene ID	1508
Gene Symbol	CTSB
Uniprot ID	CATB_HUMAN
Immunogen	The antiserum was produced against synthesized peptide derived from human Cathepsin B at amino acid range 168-217
Immunogen Region	Internal
Specificity	CTSB polyclonal antibody (Cathepsin B) binds to endogenous Cathepsin B at the amino acid region Internal.
Immunogen Sequence	



Western blot analysis of lysate from COLO cells, using Cathepsin B antibody.



Immunohistochemistry analysis of Cathepsin B antibody in paraffin-embedded human brain tissue.

Immunohistochemical analysis of paraffin-embedded Human colon. 1. Antibody was diluted at 1:200 (4°C overnight). 2. High-pressure and temperature EDTA, pH8.0 was used for antigen retrieval. 3. Secondary antibody was diluted at 1:200 (room temperature, 30min).

Immunohistochemical analysis of paraffin-embedded Human colon. 1. Antibody was diluted at 1:200 (4°C overnight). 2. High-pressure and temperature EDTA, pH8.0 was used for antigen retrieval. 3. Secondary antibody was diluted at 1:200 (room temperature, 30min).