

## Anti-HRH4 antibody (190-270 Internal) (STJ93508)

STJ93508

### GENERAL INFORMATION

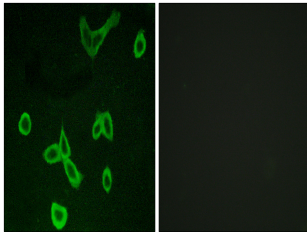
<b>Product Type</b>	Primary antibodies
<b>Short Description</b>	Rabbit polyclonal antibody anti-Histamine H4 Receptor (190-270 Internal) is suitable for use in Western Blot, Immunofluorescence, Immunocytochemistry and ELISA research applications.
<b>Applications</b>	WB, IF, ICC, ELISA
<b>Host/Source</b>	Rabbit
<b>Reactivity</b>	Human, Rat, Mouse

### PRODUCT PROPERTIES

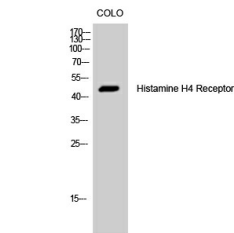
<b>Clonality</b>	Polyclonal
<b>Clone ID</b>	
<b>Concentration</b>	1 mg/mL
<b>Conjugation</b>	Unconjugated
<b>Purification</b>	The antibody was affinity-purified from rabbit anti-serum by affinity-chromatography.
<b>Dilution Range</b>	WB 1:500-1:2000 IF 1:200-1:1000 ELISA 1:5000
<b>Formulation</b>	PBS, 50% Glycerol, 0.5% BSA and 0.02% Sodium Azide.
<b>Isotype</b>	IgG
<b>Storage Instruction</b>	Store at -20°C for up to 1 year from the date of receipt, and avoid repeat freeze-thaw cycles.

### TARGET INFORMATION

<b>Gene ID</b>	59340
<b>Gene Symbol</b>	HRH4
<b>Uniprot ID</b>	HRH4_HUMAN
<b>Immunogen</b>	The antiserum was produced against synthesized peptide derived from human HRH4 at amino acid range 221-270
<b>Immunogen Region</b>	190-270 Internal
<b>Specificity</b>	HRH4 polyclonal antibody (Histamine H4 Receptor) binds to endogenous Histamine H4 Receptor at the amino acid region 190-270 Internal.
<b>Immunogen Sequence</b>	



Immunofluorescence analysis of LOVO cells, using HRH4 Antibody. The picture on the right is blocked with the synthesized peptide.



Western blot analysis of COLO cells using Histamine H4 Receptor Polyclonal Antibody

This product is suitable for in-vitro studies under the RESEARCH USE ONLY [RUO] licence. This product must not be used as for diagnostic or other medical purposes.  
St John's Laboratory Ltd, Knowledge Dock Business Centre, University Way, London, E16 2RD | Tel: 0208 223 3081