

Anti-IL2RB antibody (300-380) (STJ93696)

STJ93696

GENERAL INFORMATION

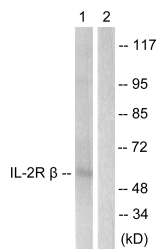
Product Type	Primary antibodies
Short Description	Rabbit polyclonal antibody anti-Interleukin-2 Receptor Subunit Beta (300-380) is suitable for use in Western Blot, Immunofluorescence, Immunocytochemistry and ELISA research applications.
Applications	WB, IF, ICC, ELISA
Host/Source	Rabbit
Reactivity	Human, Mouse, Rat

PRODUCT PROPERTIES

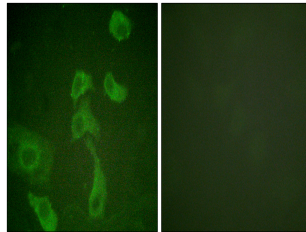
Clonality	Polyclonal
Clone ID	
Concentration	1 mg/mL
Conjugation	Unconjugated
Purification	The antibody was affinity-purified from rabbit anti-serum by affinity-chromatography.
Dilution Range	WB 1:500-1:2000 IF 1:200-1:1000 ELISA 1:10000
Formulation	PBS, 50% Glycerol, 0.5% BSA and 0.02% Sodium Azide.
Isotype	IgG
Storage Instruction	Store at -20°C for up to 1 year from the date of receipt, and avoid repeat freeze-thaw cycles.

TARGET INFORMATION

Gene ID	3560
Gene Symbol	IL2RB
Uniprot ID	IL2RB_HUMAN
Immunogen	The antiserum was produced against synthesized peptide derived from human IL-2R beta at amino acid range 331-380
Immunogen Region	300-380
Specificity	IL2RB polyclonal antibody (Interleukin-2 Receptor Subunit Beta) binds to endogenous Interleukin-2 Receptor Subunit Beta at the amino acid region 300-380.
Immunogen Sequence	



Western blot analysis of lysates from HepG2 cells, using IL-2R beta Antibody. The lane on the right is blocked with the synthesized peptide.



Immunofluorescence analysis of HeLa cells, using IL-2R beta Antibody. The picture on the right is blocked with the synthesized peptide.

This product is suitable for in-vitro studies under the RESEARCH USE ONLY [RUO] licence. This product must not be used as for diagnostic or other medical purposes.
St John's Laboratory Ltd, Knowledge Dock Business Centre, University Way, London, E16 2RD | Tel: 0208 223 3081