

Anti-IP6K2 antibody (130-210 Internal) (STJ93747)

STJ93747

GENERAL INFORMATION

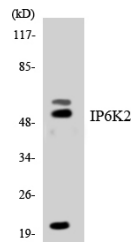
| | |
|--------------------------|---|
| Product Type | Primary antibodies |
| Short Description | Rabbit polyclonal antibody anti-Inositol Hexakisphosphate Kinase 2 (130-210 Internal) is suitable for use in Western Blot, Immunohistochemistry, Immunofluorescence, Immunocytochemistry and ELISA research applications. |
| Applications | WB, IHC-P, IF, ICC, ELISA |
| Host/Source | Rabbit |
| Reactivity | Human, Mouse, Rat |

PRODUCT PROPERTIES

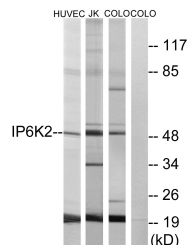
| | |
|----------------------------|--|
| Clonality | Polyclonal |
| Clone ID | |
| Concentration | 1 mg/mL |
| Conjugation | Unconjugated |
| Purification | The antibody was affinity-purified from rabbit anti-serum by affinity-chromatography. |
| Dilution Range | WB 1:500-1:2000 IHC 1:100-1:300 IF 1:200-1:1000 ELISA 1:40000 |
| Formulation | PBS, 50% Glycerol, 0.5% BSA and 0.02% Sodium Azide. |
| Isotype | IgG |
| Storage Instruction | Store at -20°C for up to 1 year from the date of receipt, and avoid repeat freeze-thaw cycles. |

TARGET INFORMATION

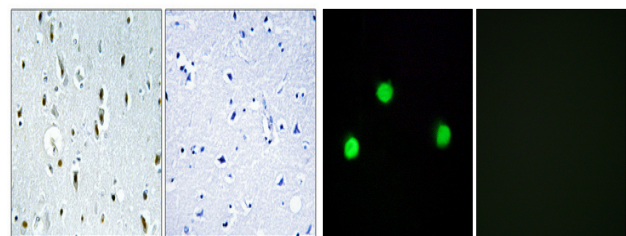
| | |
|---------------------------|--|
| Gene ID | 51447 |
| Gene Symbol | IP6K2 |
| Uniprot ID | IP6K2_HUMAN |
| Immunogen | The antiserum was produced against synthesized peptide derived from human IP6K2 at amino acid range 161-210 |
| Immunogen Region | 130-210 Internal |
| Specificity | IP6K2 polyclonal antibody (Inositol Hexakisphosphate Kinase 2) binds to endogenous Inositol Hexakisphosphate Kinase 2 at the amino acid region 130-210 Internal. |
| Immunogen Sequence | |



Western blot analysis of the lysates from K562 cells using IP6K2 antibody.



Western blot analysis of lysates from HUVEC, COLO, and Jurkat cells, using IP6K2 Antibody. The lane on the right is blocked with the synthesized peptide.



Immunohistochemical analysis of paraffin-embedded Human brain. Antibody was diluted at 1:100 (4°C overnight). High-pressure and temperature Tris-EDTA, pH8.0 was used for antigen retrieval. Negative control (right) obtained from antibody was pre-absorbed by immunogen peptide.

Immunofluorescence analysis of COS7 cells, using IP6K2 Antibody. The picture on the right is blocked with the synthesized peptide.