

Anti-MRE11 antibody (200-280) (STJ94194)

STJ94194

GENERAL INFORMATION

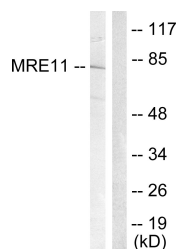
Product Type	Primary antibodies
Short Description	Rabbit polyclonal antibody anti-Double-Strand Break Repair Protein Mre11 (200-280) is suitable for use in Western Blot, Immunohistochemistry, Immunofluorescence and ELISA research applications.
Applications	WB, IHC-P, IF-P, ELISA
Host/Source	Rabbit
Reactivity	Human, Mouse, Rat, Monkey

PRODUCT PROPERTIES

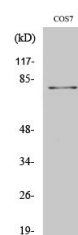
Clonality	Polyclonal
Clone ID	
Concentration	1 mg/mL
Conjugation	Unconjugated
Purification	The antibody was affinity-purified from rabbit anti-serum by affinity-chromatography.
Dilution	WB 1:500-1:2000
Range	IHC 1:100-1:300 ELISA 1:20000
Formulation	PBS, 50% Glycerol, 0.5% BSA and 0.02% Sodium Azide.
Isotype	IgG
Storage Instruction	Store at -20°C for up to 1 year from the date of receipt, and avoid repeat freeze-thaw cycles.

TARGET INFORMATION

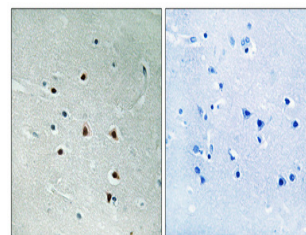
Gene ID	4361
Gene Symbol	MRE11
Uniprot ID	MRE11_HUMAN
Immunogen	The antiserum was produced against synthesized peptide derived from human MRE11 at amino acid range 230-279
Immunogen Region	200-280
Specificity	MRE11 polyclonal antibody (Double-Strand Break Repair Protein Mre11) binds to endogenous Double-Strand Break Repair Protein Mre11 at the amino acid region 200-280.
Immunogen Sequence	



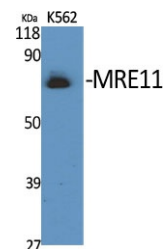
Western blot analysis of lysates from Jurkat cells, treated with UV 15', using MRE11 Antibody. The lane on the right is blocked with the synthesized peptide.



Western blot analysis of COS7 cells using MRE11 Polyclonal Antibody cells nucleus extracted by Minute TM Cytoplasmic and Nuclear Fractionation kit (SC-003, Inventiotech, MN, USA).



Immunohistochemical analysis of paraffin-embedded Human brain. Antibody was diluted at 1:100 (4°C overnight). High-pressure and temperature Tris-EDTA, pH8.0 was used for antigen retrieval. Negative control (right) obtained from antibody was pre-absorbed by immunogen peptide.



Western blot analysis of various cells using MRE11 Polyclonal Antibody cells nucleus extracted by Minute TM Cytoplasmic and Nuclear Fractionation kit (SC-003, Inventiotech, MN, USA).

This product is suitable for in-vitro studies under the RESEARCH USE ONLY [RUO] licence. This product must not be used as for diagnostic or other medical purposes.
St John's Laboratory Ltd, Knowledge Dock Business Centre, University Way, London, E16 2RD | Tel: 0208 223 3081