

Anti-CDKN1A antibody (80-160) (STJ94862)

STJ94862

GENERAL INFORMATION

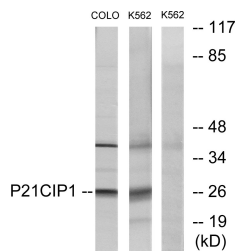
Product Type	Primary antibodies
Short Description	Rabbit polyclonal antibody anti-Cyclin-Dependent Kinase Inhibitor 1 (80-160) is suitable for use in Immunofluorescence, Immunocytochemistry, Western Blot, Immunohistochemistry and ELISA research applications.
Applications	IF, ICC, WB, IHC-P, ELISA
Host/Source	Rabbit
Reactivity	Human, Mouse, Rat

PRODUCT PROPERTIES

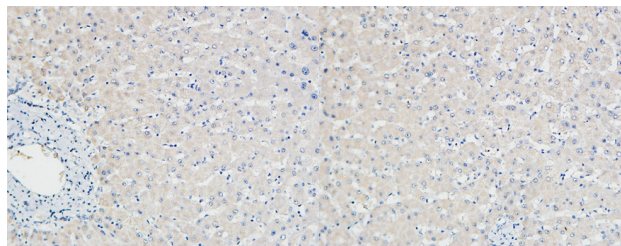
Clonality	Polyclonal
Clone ID	
Concentration	1 mg/mL
Conjugation	Unconjugated
Purification	The antibody was affinity-purified from rabbit anti-serum by affinity-chromatography.
Dilution	IF 1:50-200
Range	WB 1:500-1:2000 ELISA 1:20000
Formulation	PBS, 50% Glycerol, 0.5% BSA and 0.02% Sodium Azide.
Isotype	IgG
Storage Instruction	Store at -20°C for up to 1 year from the date of receipt, and avoid repeat freeze-thaw cycles.

TARGET INFORMATION

Gene ID	1026
Gene Symbol	CDKN1A
Uniprot ID	CDN1A_HUMAN
Immunogen	The antiserum was produced against synthesized peptide derived from human p21 Cip1 at amino acid range 111-160
Immunogen Region	80-160
Specificity	CDKN1A polyclonal antibody (Cyclin-Dependent Kinase Inhibitor 1) binds to endogenous Cyclin-Dependent Kinase Inhibitor 1 at the amino acid region 80-160.
Immunogen Sequence	

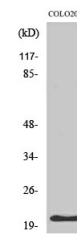


Western blot analysis of lysates from COLO and K562 cells, treated with EGF using p21 Cip1 Antibody. The lane on the right is blocked with the synthesized peptide.



Immunohistochemical analysis of paraffin-embedded Human Right liver. 1. Antibody was diluted at 1:100 (4°C overnight), 2. High-pressure and temperature EDTA, pH8.0 was used for antigen retrieval, 3. Secondary antibody was diluted at 1:200 (room temperature, 30min).

Immunohistochemical analysis of paraffin-embedded Human Right liver. 1. Antibody was diluted at 1:100 (4°C overnight), 2. High-pressure and temperature EDTA, pH8.0 was used for antigen retrieval, 3. Secondary antibody was diluted at 1:200 (room temperature, 30min).



Western blot analysis of COLO205 cells using p21 Polyclonal Antibody

This product is suitable for in-vitro studies under the RESEARCH USE ONLY [RUO] licence. This product must not be used as for diagnostic or other medical purposes.
St John's Laboratory Ltd, Knowledge Dock Business Centre, University Way, London, E16 2RD | Tel: 0208 223 3081