

Anti-PARD3 antibody (1110-1190 C-Term) (STJ94955)

STJ94955

GENERAL INFORMATION

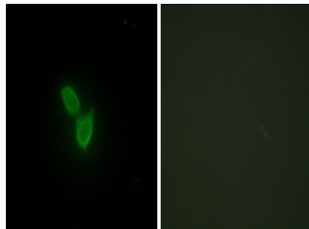
Product Type	Primary antibodies
Short Description	Rabbit polyclonal antibody anti-Partitioning Defective 3 Homolog (1110-1190 C-Term) is suitable for use in Western Blot, Immunohistochemistry, Immunofluorescence, Immunocytochemistry and ELISA research applications.
Applications	WB, IHC-P, IF, ICC, ELISA
Host/Source	Rabbit
Reactivity	Human, Mouse, Rat

PRODUCT PROPERTIES

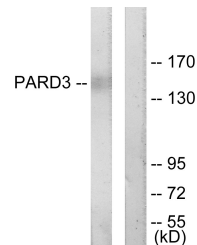
Clonality	Polyclonal
Clone ID	
Concentration	1 mg/mL
Conjugation	Unconjugated
Purification	The antibody was affinity-purified from rabbit anti-serum by affinity-chromatography.
Dilution Range	WB 1:500-1:2000 IHC 1:100-1:300 IF 1:200-1:1000 ELISA 1:20000
Formulation	PBS, 50% Glycerol, 0.5% BSA and 0.02% Sodium Azide.
Isotype	IgG
Storage Instruction	Store at -20°C for up to 1 year from the date of receipt, and avoid repeat freeze-thaw cycles.

TARGET INFORMATION

Gene ID	56288
Gene Symbol	PARD3
Uniprot ID	PARD3_HUMAN
Immunogen	The antiserum was produced against synthesized peptide derived from human PARD3 at amino acid range 1141-1190
Immunogen Region	1110-1190 C-Term
Specificity	PARD3 polyclonal antibody (Partitioning Defective 3 Homolog) binds to endogenous Partitioning Defective 3 Homolog at the amino acid region 1110-1190 C-Term.
Immunogen Sequence	



Immunofluorescence analysis of HepG2 cells, using PARD3 Antibody. The picture on the right is blocked with the synthesized peptide.



Western blot analysis of lysates from COLO205 cells, using PARD3 Antibody. The lane on the right is blocked with the synthesized peptide.



Western blot analysis of various cells using PARD3A Polyclonal Antibody

This product is suitable for in-vitro studies under the RESEARCH USE ONLY [RUO] licence. This product must not be used as for diagnostic or other medical purposes.
St John's Laboratory Ltd, Knowledge Dock Business Centre, University Way, London, E16 2RD | Tel: 0208 223 3081