

Anti-RCVRN antibody (80-160 Internal) (STJ95402)

STJ95402

GENERAL INFORMATION

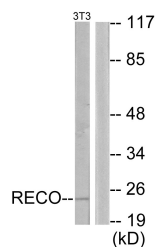
Product Type	Primary antibodies
Short Description	Rabbit polyclonal antibody anti-Recoverin (80-160 Internal) is suitable for use in Western Blot, Immunohistochemistry, Immunofluorescence, Immunocytochemistry and ELISA research applications.
Applications	WB, IHC-P, IF, ICC, ELISA
Host/Source	Rabbit
Reactivity	Human, Mouse

PRODUCT PROPERTIES

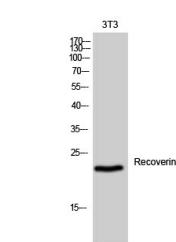
Clonality	Polyclonal
Clone ID	
Concentration	1 mg/mL
Conjugation	Unconjugated
Purification	The antibody was affinity-purified from rabbit anti-serum by affinity-chromatography.
Dilution	WB 1:500-1:2000
Range	IHC 1:100-1:300 IF 1:200-1:1000 ELISA 1:20000
Formulation	PBS, 50% Glycerol, 0.5% BSA and 0.02% Sodium Azide.
Isotype	IgG
Storage Instruction	Store at -20°C for up to 1 year from the date of receipt, and avoid repeat freeze-thaw cycles.

TARGET INFORMATION

Gene ID	5957
Gene Symbol	RCVRN
Uniprot ID	RECO_HUMAN
Immunogen	The antiserum was produced against synthesized peptide derived from human Recoverin at amino acid range 107-156
Immunogen Region	80-160 Internal
Specificity	RCVRN polyclonal antibody (Recoverin) binds to endogenous Recoverin at the amino acid region 80-160 Internal.
Immunogen Sequence	



Western blot analysis of lysates from NIH/3T3 cells, using ReC overin Antibody. The lane on the right is blocked with the synthesized peptide.



Western blot analysis of 3T3 cells using ReC overin Polyclonal Antibody.

This product is suitable for in-vitro studies under the RESEARCH USE ONLY [RUO] licence. This product must not be used as for diagnostic or other medical purposes.
St John's Laboratory Ltd, Knowledge Dock Business Centre, University Way, London, E16 2RD | Tel: 0208 223 3081