

## Anti-SMC1A antibody (900-980) (STJ95705)

STJ95705

### GENERAL INFORMATION

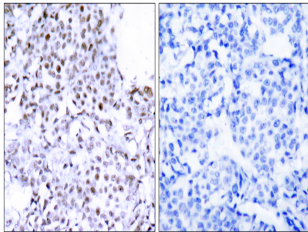
<b>Product Type</b>	Primary antibodies
<b>Short Description</b>	Rabbit polyclonal antibody anti-Structural Maintenance Of Chromosomes Protein 1a (900-980) is suitable for use in Western Blot, Immunohistochemistry, Immunofluorescence and ELISA research applications.
<b>Applications</b>	WB, IHC-P, IF-P, ELISA
<b>Host/Source</b>	Rabbit
<b>Reactivity</b>	Human, Mouse

### PRODUCT PROPERTIES

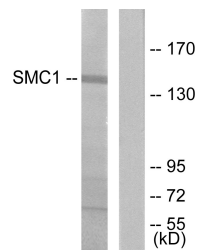
<b>Clonality</b>	Polyclonal
<b>Clone ID</b>	
<b>Concentration</b>	1 mg/mL
<b>Conjugation</b>	Unconjugated
<b>Purification</b>	The antibody was affinity-purified from rabbit anti-serum by affinity-chromatography.
<b>Dilution Range</b>	WB 1:500-1:2000 IHC 1:100-1:300 ELISA 1:10000
<b>Formulation</b>	PBS, 50% Glycerol, 0.5% BSA and 0.02% Sodium Azide.
<b>Isotype</b>	IgG
<b>Storage Instruction</b>	Store at -20°C for up to 1 year from the date of receipt, and avoid repeat freeze-thaw cycles.

### TARGET INFORMATION

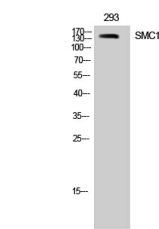
<b>Gene ID</b>	8243
<b>Gene Symbol</b>	SMC1A
<b>Uniprot ID</b>	SMC1A_HUMAN
<b>Immunogen</b>	The antiserum was produced against synthesized peptide derived from human SMC1 at amino acid range 931-980
<b>Immunogen Region</b>	900-980
<b>Specificity</b>	SMC1A polyclonal antibody (Structural Maintenance Of Chromosomes Protein 1a) binds to endogenous Structural Maintenance Of Chromosomes Protein 1a at the amino acid region 900-980.
<b>Immunogen Sequence</b>	



Immunohistochemistry analysis of paraffin-embedded human breast carcinoma tissue, using SMC1 Antibody. The picture on the right is blocked with the synthesized peptide.



Western blot analysis of lysates from 293 cells, treated with UV 15', using SMC1 Antibody. The lane on the right is blocked with the synthesized peptide.



Western blot analysis of 293 cells using SMC1 Polyclonal Antibody