

Anti-Synaptotagmin antibody (250-330) (STJ95849)

STJ95849

GENERAL INFORMATION

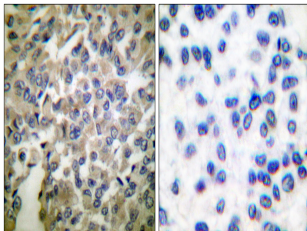
Product Type	Primary antibodies
Short Description	Rabbit polyclonal antibody anti-Synaptotagmin-1 and Synaptotagmin-2 (250-330) is suitable for use in Western Blot, Immunohistochemistry, Immunofluorescence and ELISA research applications.
Applications	WB, IHC-P, IF-P, ELISA
Host/Source	Rabbit
Reactivity	Human, Mouse, Rat

PRODUCT PROPERTIES

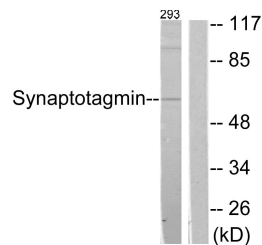
Clonality	Polyclonal
Clone ID	
Concentration	1 mg/mL
Conjugation	Unconjugated
Purification	The antibody was affinity-purified from rabbit anti-serum by affinity-chromatography.
Dilution Range	WB 1:500-1:2000 IHC 1:100-1:300 ELISA 1:20000
Formulation	PBS, 50% Glycerol, 0.5% BSA and 0.02% Sodium Azide.
Isotype	IgG
Storage Instruction	Store at -20°C for up to 1 year from the date of receipt, and avoid repeat freeze-thaw cycles.

TARGET INFORMATION

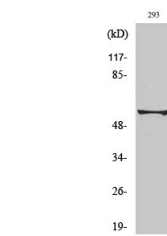
Gene ID	6857 127833
Gene Symbol	SYT1 SYT2
Uniprot ID	SYT1_HUMAN SYT2_HUMAN
Immunogen	The antiserum was produced against synthesized peptide derived from human Synaptotagmin at amino acid range 276-325
Immunogen Region	250-330
Specificity	Synaptotagmin polyclonal antibody (Synaptotagmin-1 and Synaptotagmin-2) binds to endogenous Synaptotagmin-1 and Synaptotagmin-2 at the amino acid region 250-330.
Immunogen Sequence	



Immunohistochemistry analysis of paraffin-embedded human breast carcinoma tissue, using Synaptotagmin Antibody. The picture on the right is blocked with the synthesized peptide.



Western blot analysis of lysates from 293 cells, treated with Forskolin 40nM 30', using Synaptotagmin Antibody. The lane on the right is blocked with the synthesized peptide.



Western blot analysis of various cells using Synaptotagmin Polyclonal Antibody diluted at 1: 2000

This product is suitable for in-vitro studies under the RESEARCH USE ONLY [RUO] licence. This product must not be used as for diagnostic or other medical purposes.
St John's Laboratory Ltd, Knowledge Dock Business Centre, University Way, London, E16 2RD | Tel: 0208 223 3081