

## Anti-Synaptotagmin antibody (150-230) (STJ95850)

STJ95850

### GENERAL INFORMATION

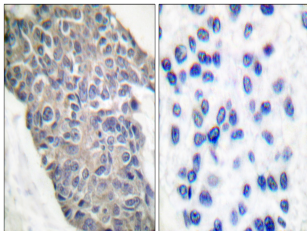
|                          |  |
|--------------------------|--|
| <b>Product Type</b>      | Primary antibodies   |
| <b>Short Description</b> | Rabbit polyclonal antibody anti-Synaptotagmin-1 and Synaptotagmin-2 (150-230) is suitable for use in Western Blot, Immunohistochemistry, Immunofluorescence and ELISA research applications. |
| <b>Applications</b>      | WB, IHC-P, IF-P, ELISA   |
| <b>Host/Source</b>       | Rabbit   |
| <b>Reactivity</b>        | Human, Mouse, Rat  |

### PRODUCT PROPERTIES

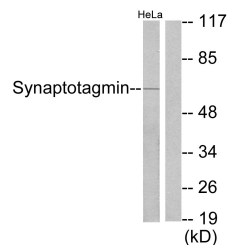
|                            |  |
|----------------------------|--|
| <b>Clonality</b>           | Polyclonal   |
| <b>Clone ID</b>            |  |
| <b>Concentration</b>       | 1 mg/mL  |
| <b>Conjugation</b>         | Unconjugated   |
| <b>Purification</b>        | The antibody was affinity-purified from rabbit anti-serum by affinity-chromatography.          |
| <b>Dilution Range</b>      | WB 1:500-1:2000<br>IHC 1:100-1:300<br>ELISA 1:5000   |
| <b>Formulation</b>         | PBS, 50% Glycerol, 0.5% BSA and 0.02% Sodium Azide.  |
| <b>Isotype</b>             | IgG  |
| <b>Storage Instruction</b> | Store at -20°C for up to 1 year from the date of receipt, and avoid repeat freeze-thaw cycles. |

### TARGET INFORMATION

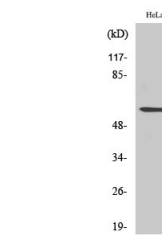
|                           |   |
|---------------------------|---|
| <b>Gene ID</b>            | <a href="#">127833</a><br><a href="#">6857</a>  |
| <b>Gene Symbol</b>        | <a href="#">SYT2</a><br><a href="#">SYT1</a>  |
| <b>Uniprot ID</b>         | <a href="#">SYT2_HUMAN</a><br><a href="#">SYT1_HUMAN</a>  |
| <b>Immunogen</b>          | The antiserum was produced against synthesized peptide derived from human Synaptotagmin at amino acid range 176-225   |
| <b>Immunogen Region</b>   | 150-230   |
| <b>Specificity</b>        | Synaptotagmin polyclonal antibody (Synaptotagmin-1 and Synaptotagmin-2) binds to endogenous Synaptotagmin-1 and Synaptotagmin-2 at the amino acid region 150-230. |
| <b>Immunogen Sequence</b> |   |



Immunohistochemistry analysis of paraffin-embedded human breast carcinoma tissue, using Synaptotagmin Antibody. The picture on the right is blocked with the synthesized peptide.



Western blot analysis of lysates from HeLa cells, using Synaptotagmin Antibody. The lane on the right is blocked with the synthesized peptide.



Western blot analysis of various cells using Synaptotagmin Polyclonal Antibody

This product is suitable for in-vitro studies under the RESEARCH USE ONLY [RUO] licence. This product must not be used as for diagnostic or other medical purposes.  
St John's Laboratory Ltd, Knowledge Dock Business Centre, University Way, London, E16 2RD | Tel: 0208 223 3081