

Anti-EEA1 antibody (N-Term) (STJ96393)

STJ96393

GENERAL INFORMATION

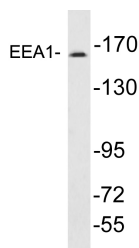
Product Type	Primary antibodies
Short Description	Rabbit polyclonal antibody anti-Early Endosome antigen 1 (N-Term) is suitable for use in Western Blot and ELISA research applications.
Applications	WB, ELISA
Host/Source	Rabbit
Reactivity	Human, Mouse

PRODUCT PROPERTIES

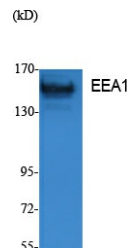
Clonality	Polyclonal
Clone ID	
Concentration	1 mg/mL
Conjugation	Unconjugated
Purification	The antibody was affinity-purified from rabbit anti-serum by affinity-chromatography.
Dilution Range	WB 1:500-1:2000 ELISA 1:20000
Formulation	PBS, 50% Glycerol, 0.5% BSA and 0.02% Sodium Azide.
Isotype	IgG
Storage Instruction	Store at -20°C for up to 1 year from the date of receipt, and avoid repeat freeze-thaw cycles.

TARGET INFORMATION

Gene ID	8411
Gene Symbol	EEA1
Uniprot ID	EEA1_HUMAN
Immunogen	The antiserum was produced against synthesized peptide derived from human EEA1 at amino acid range 205-254
Immunogen Region	N-Term
Specificity	EEA1 polyclonal antibody (Early Endosome Antigen 1) binds to endogenous Early Endosome Antigen 1 at the amino acid region N-Term.
Immunogen Sequence	



Western blot analysis of lysates from A431 cells, using EEA1 antibody.



Western blot analysis of extracts from K562 cells, using EEA1 Polyclonal Antibody. Secondary antibody was diluted at 1:20000

This product is suitable for in-vitro studies under the RESEARCH USE ONLY [RUO] licence. This product must not be used as for diagnostic or other medical purposes.
St John's Laboratory Ltd, Knowledge Dock Business Centre, University Way, London, E16 2RD | Tel: 0208 223 3081