

Anti-POLE2 antibody (Internal) (STJ96430)

STJ96430

GENERAL INFORMATION

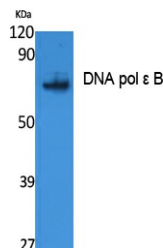
Product Type	Primary antibodies
Short Description	Rabbit polyclonal antibody anti-Dna Polymerase Epsilon Subunit 2 (Internal) is suitable for use in Western Blot and ELISA research applications.
Applications	WB, ELISA
Host/Source	Rabbit
Reactivity	Human, Rat, Mouse

PRODUCT PROPERTIES

Clonality	Polyclonal
Clone ID	
Concentration	1 mg/mL
Conjugation	Unconjugated
Purification	The antibody was affinity-purified from rabbit anti-serum by affinity-chromatography.
Dilution Range	WB 1:500-1:2000 ELISA 1:40000
Formulation	PBS, 50% Glycerol, 0.5% BSA and 0.02% Sodium Azide.
Isotype	IgG
Storage	Store at -20°C for up to 1 year from the date of receipt, and avoid repeat freeze-thaw cycles.
Instruction	

TARGET INFORMATION

Gene ID	5427
Gene Symbol	POLE2
Uniprot ID	DPOE2_HUMAN
Immunogen	Synthesized peptide derived from the Internal region of human DNA pol Epsilon B.
Immunogen Region	Internal
Specificity	POLE2 polyclonal antibody (Dna Polymerase Epsilon Subunit 2) binds to endogenous Dna Polymerase Epsilon Subunit 2 at the amino acid region Internal.
Immunogen Sequence	



Western blot analysis of extracts from Jurkat cells, using DNA pol Epsilon B Polyclonal Antibody. Secondary antibody was diluted at 1:20000 cells nucleus extracted by Minute TM Cytoplasmic and Nuclear Fractionation kit (SC-003, Inventibiotech, MN, USA).