

Anti-KLRB1 antibody (101-150 Internal) (STJ96641)

STJ96641

GENERAL INFORMATION

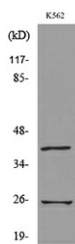
Product Type	Primary antibodies
Short Description	Rabbit polyclonal antibody anti-Killer Cell Lectin-Like Receptor Subfamily B Member 1 (101-150 Internal) is suitable for use in Western Blot and ELISA research applications.
Applications	WB, ELISA
Host/Source	Rabbit
Reactivity	Human, Rat, Mouse

PRODUCT PROPERTIES

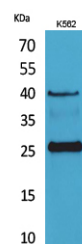
Clonality	Polyclonal
Clone ID	
Concentration	1 mg/mL
Conjugation	Unconjugated
Purification	The antibody was affinity-purified from rabbit anti-serum by affinity-chromatography.
Dilution	WB 1:500-1:2000
Range	ELISA 1:20000
Formulation	PBS, 50% Glycerol, 0.5% BSA and 0.02% Sodium Azide.
Isotype	IgG
Storage	Store at -20°C for up to 1 year from the date of receipt, and avoid repeat freeze-thaw cycles.
Instruction	

TARGET INFORMATION

Gene ID	3820
Gene Symbol	KLRB1
Uniprot ID	KLRB1_HUMAN
Immunogen	The antiserum was produced against synthesized peptide derived from the Internal region of human KLRB1 at amino acid range 101-150
Immunogen Region	101-150 Internal
Specificity	KLRB1 polyclonal antibody (Killer Cell Lectin-Like Receptor Subfamily B Member 1) binds to endogenous Killer Cell Lectin-Like Receptor Subfamily B Member 1 at the amino acid region 101-150 Internal.
Immunogen Sequence	



Western blot analysis of lysate from K562 cells, using KLRB1 Antibody.



Western blot analysis of K562 cells using CD161 Polyclonal Antibody. Secondary antibody was diluted at 1:20000.